

RADIO YACHT SUPPLIES AUSTRALIA



2009 AD CATALOGUE

INDEX

	<i>Page</i>
Boat Electrics	9
Books/Magazines/DVD	6
Boom fittings	22,23,24
Boom kits, completed booms, boom sections	13
Cord	8
Deck kits - One Metre, EC12	12
EC12 - rig kits, deck kit	13
Fasteners	31
Fittings - One Metre	29,30
Gift Vouchers	8
Hand tools	8
Hull / deck fittings	15,16,17
Hull fittings kit, EC12	10
Hull identification	7
Hull, keel fin box, mast tube mouldings	11,12
Keel bulbs	12
Keel fins	12
Mast fittings - gooseneck spare parts	19,20
Mast / spar material	14
Miscellaneous	8
Pekabe fittings	26,26,27,28
Plans - lines plans, construction plans	4,5
Radio accessories	9
Radios / spares	9
Rig kits	12
Rig plans	17
Rigging / related fittings	17,18
Rudders	10
Rudder / hull components	10
Sail identification	7
Sailmaking materials	7
Sailwinches / Accessories	9
Steering components	10
Technical information	8
Wire (standing rigging, hooks)	8
Yacht Kit, Soling	21
Ordering Procedure	3

ORDERING PROCEDURE

Orders may be placed via our web page, email, fax, phone or post. We are happy to supply Order Forms to make the exercise easier for fax or post. To assist us, please use part numbers only. If clarification of a part is required, then describe.

PAYMENT

Payment may be made by Visa, MasterCard, money order, cheque or direct credit to bank.

STOCK AVAILABILITY

Most of the items in our catalogue are held in stock and can usually be despatched same day (depending on time order received). Express Post offers overnight delivery to most locations. See Order Form regarding options if items out of stock.

PRICING (All prices include GST)

Prices shown in this catalogue supersede all previous catalogues and may be subject to change without notice due to circumstances beyond our control.

POST AND PACKAGING COSTS

We take care and effort in the packing of your order as we want the goods to arrive in the best condition. The packaging and postage cost is to be added to each order. When an order includes both mast sections and bulky items, these may be sent in separate packages. Please advise if express or registered post is required. **Schedule below is a guide only:**

Letter rate -	small packet	(up to 125gms)	\$2.50
	(no thicker than 20mm)	(up to 250gms)	\$3.00
		(up to 500gms)	\$4.00
Parcels -	small	(up to 250gms)	\$5.50
	medium	(up to 500gms)	\$6.50
	large	(over 500gms) (dependent on location)	\$10.00 +
	mast tube up to 1m length	(dependent on location)	\$12.00 +
	ADDITIONAL PACKAGING COSTS for	- keel fins, etc.	\$3.00
		- keel bulbs	\$5.00
Registered Post on above items (includes insurance up to \$100)			\$2.60
Additional Insurance on registered post articles, \$1.15per \$100 or part thereof			
Express -	Satchel	(up to 500gms)	\$8.50
	Satchel	(up to 3kg)	\$12.50
	Parcel	(up to 500gms)	\$9.00
	Parcel	(over 500gms) (dependent on location)	\$15.00 +
Overnight -	door to door - rig kits / 1.9m mast & fittings with TNT	from	\$20.00 +
	(additional freight cost of \$11.50 for sections over 1.9m)		
Insurance -	now available, \$1.50 per \$100.00 (pls advise at time of ordering if required)		

DISCLAIMER

All descriptions, illustrations, dimensions, indications of colours or other instructions furnished in this catalogue are accurate to the best of our ability at time of printing. Specifications may change without notice.

www.rysa.com.au

Malcolm and Shirley Kampe
17 Golden Oak Crescent
Carindale Qld 4152

Email sales@rysa.com.au
Fax (07) 3343.6588
Phone (07) 3343.6711

Monarch

Vektor

Rococo

Privateer

Iota

Ballasts



© Graham Bantock 2007

Lines plans / construction plans

A **lines plan** is a two dimensional representation of the hull lines. The position and profile shape, but not the sections, of fin, rudder and ballast are shown but no construction details are given.

A **construction plan** gives more information concerning the component parts but the method of construction is not explained in detail. Chris Jackson's book "Radio Controlled Racing Sailboats" is the best current source of information regarding the planking process.

No rig details are shown on One Metre class plans. Other class plans show basic rig dimensions only, unless otherwise indicated. See Rig Plan RP16d for full details (ref. page 9).

VPP - indicates the design compares very well with others using the SAILSetc speed prediction program.

BALLASTS - All classes, 2003 - Lines plan only ***LP-BAL*** \$23.15

If you cannot source a good ballast locally, this may be the solution. The lines of patterns for ballasts suitable for an IOM, M, 6M and an A Class are shown. Carve a balsa pattern and let a foundry cast it. Instructions are given to allow scaling to provide any ballast from 1 to 22 kgs.

FOILS - All classes, 2006 - Lines plan only ***LP-FOI*** \$15.40

SAILSetc lines plans do not show the section shapes for the fin or rudder. SAILSetc recommend using their moulded fins and rudders for best stiffness and lowest drag. This plan shows publicly available section shapes that can be used for the various applications from IOM to A Class, fins and rudders.

NIMBUS MkII - One Metre, 2005, VPP - Construction plan CP-NIM \$51.20

Updated version of this round bilge hull for planked or moulded construction.

Very complete construction details for hull. Marine Modelling plan and best choice for beginners to the sport and to home building. See rig plan RP16d for rig details.

VEKTOR - One Metre, 2006, VPP - Lines plan only ***LP-VEK*** \$38.55

Round bilge hull of moderate beam for planked construction. Sections and frames shown full size with plan and profile at half size. Use thin plywood for the foredeck and cockpit. Use the moulded carbon/epoxy fin and plastic rudder 370c/359z. Full rig details on rig plan RP16d.

ZIG ZAG - One Metre, 2006, VPP - Lines plan only ***LP-ZIG*** \$38.55

Round bilge hull of narrower beam for planked construction. Sections and frames shown full size with plan and profile at half size. Use thin plywood for the foredeck and cockpit. Use the moulded carbon/epoxy fin and plastic rudder 370c/359z. Full rig details on rig plan RP16d.

BOXKITE - One Metre, 2002, VPP - Construction plan ***CP-BOX*** \$51.20

Hard chine version of KITE with four panels each side for a quick to build hull. Use thin plywood to make the panel shapes shown full size on this Marine Modelling plan. Full rig details are also shown or use SAILSetc rig plan RP16d.

MONARCH - Marblehead, 2003, 5.0 ± 0.2kg, VPP - Construction plan ***CP-MON*** \$51.20

Close sister to PRIME NUMBER. Marine Modelling plan with a good deal of construction detail, an ideal project after NIMBUS. Details of carbon/balsa fin/rudder construction are given; or use SAILSetc moulded items 370a/360b. Rig plan included.

IOTA - Ten Rater, 2001, 5.8 ± 0.1kg, VPP - Lines plan only ***LP-IOT*** \$64.25

A hull form based on PRIZM and carefully optimised to beat a Marblehead rigged as a 10R in all conditions. Frame sizes are given for 3.5mm thick planks. Make the fin & rudder as shown on the MONARCH plan or use SAILSetc moulded items 370a/360b. Sail area circa. 1.07m².

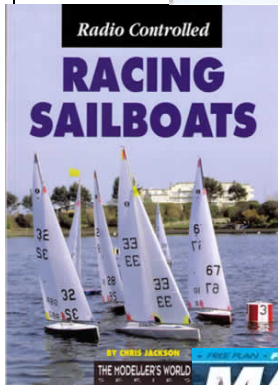
PRIVATEER - A Class, 2006, 17kg, 1.0m², VPP - Lines plan only ***LP-PRI*** \$77.00

Sections, frames and alternative ballast are shown full size. Frame sizes are given for 3.5mm thick planks. Other lines are shown at quarter size. Make fin and rudder as shown on the MONARCH plan or use SAILSetc moulded items 350e/350f/360a/209 for best results.

Books, magazines, DVD



Making Model Yacht Sails (47 pages) (Book 1) \$36.50
By Larry Robinson
An in-depth "how to" on sailmaking for r/c yachts, including detailed description of the concept of using profiled blocks to shape sails. Chapters cover Camber Distribution; Controlling Camber When Making Model Yacht Sails' Shaping Sail Blocks Precisely; Sail Material Choices; Broadseaming Revisited; Cutting the Luff; Taking and Analysing Sail Photographs; Making a Tensionometer; Comparing Camber Distribution



Radio Controlled Racing Sailboats (Book 2) \$43.25
By Chris Jackson (108 pages)
The latest edition of the previous best book around on r.c. yachting. This new version includes planking, moulding, rigging, sailmaking, tuning and tactics. Also more photos and "how to" articles. A must for the beginner to seasoned sailor.



Marine Modelling International (Magazine 1) \$12.60
(monthly magazine) Keep in touch with what is happening with the r.c. sailing scene. Excellent how to articles, with boat tests, championship reports, sailboat renovation, canting keels on r.c. yachts and more.



Marine Modelling International (Magazine 2) \$16.90
- Plans & Construction Guide, Issue No. 6
Over 200 plans listed with colour photos of all sorts of r.c. boats including racing and scale sailboats. Good articles on choosing and building various r.c. yachts.



R/C Racing Skipper (DVD1) \$43.25
Chris Jackson covers the r/c Laser, International One Metre (IOM), Marblehead (M), Ten Rater (10R) and RA Class (A). If you're considering starting out in r.c. sailing or perhaps trying another Class, this DVD will give you good insight into some of the choices available. (Running time 80 minutes approx.)



Marvellous Marbleheads NEW (DVD2) \$43.25
Includes highlights of the World Championships held in 2006, tactics and technology by top skippers, technical information on rig set-up. (Running time 90 minutes)

Sailmaking materials

BOOK1	Making Model Yacht Sails, by Larry Robinson		\$ 36.50
BM-M	Batten material, self adhesive glass/epoxy sheet, all conditions	200x100	9.00
BM-T	Batten material, self adhesive glass/epoxy sheet, light airs	200x100	12.20
SCD-33	Sailcloth, white dacron, 3.3oz, 910mm width	per m	25.80
SCD-38	Sailcloth, white dacron, 3.8oz, 910mm width	per m	27.00
SCD-44	Sailcloth, white dacron, 4.4oz, 910mm width	per m	25.80
SCR	Sailcloth, white Ripstop polyester 0.5oz, 1370mm width	per m	37.50
SCZ-17	Sailcloth, code zero laminate, 1.7oz, 1370mm width	per m	23.45
SCZ-21	Sailcloth, code zero laminate, 2.1oz, 1370mm width	per m	25.85
SCZ-23	Sailcloth, code zero laminate, 2.3oz, 1370mm width	per m	28.35
SCZ-29	Sailcloth, code zero laminate, 2.9oz, 1370mm width	per m	30.75
TD-06	Tape, double-sided adhesive, 6mm wide for sail seams	50m	7.90
TD-09	Tape, double-sided adhesive, 9mm wide, for sail seams	50m	11.85
TD-12	Tape, double-sided adhesive, 12mm wide, for sail seams	50m	15.80
TDS-09	Tape, double-sided adhesive, SUPERSTICK, 9mm wide for sail seams	33m	13.20
TDS-12	Tape, double-sided adhesive, SUPERSTICK, 12mm wide for sail seams	33m	17.60
TM-04	Mylar tape, clear, ultra thin, 4mm width, for sail leech reinforcement	50m	14.00
TM-08	Mylar tape, clear, ultra thin, 8mm width, for sail leech reinforcement	50m	20.00
TM-10	Mylar tape, clear, ultra thin, 10mm width, for sail leech reinforcement	50m	22.00
TM-12	Mylar tape, clear, ultra thin, 12mm width, for sail leech reinforcement	50m	24.00
TM-20	Mylar tape, clear, ultra thin, 20mm width, for sail leech reinforcement	50m	31.35
TTA-12	Mylar tape, self-adhesive, 0.1mm thick, 12mm width, for mainsail luff	55m	61.55
TN	Nylon tape, 17mm, for jib luff, use with TD-06 (black/white/blue/red/yellow)	5m	7.00
P447	Thimble (Pekabe), i.d. 3.8, o.d. 6.3, width 2.5mm	20	5.40
70a	Crimps, medium, use for luff slides on sails for GROOVY masts	50	8.20
078	Eyelets, small, nickel plated brass, 1.50mm i.d.	100	5.50
079	Washers, small, stainless steel (use one per eyelet)	100	5.80
080	Eyelets, medium, nickel plated brass, 3.3mm i.d.	100	7.70
081	Washers, medium, nickel plated brass (use two per eyelet)	100	5.85
083-01	Bolt rope, for making or converting sails	per m	7.00
090	Eyelet punch for small eyelets (item #078)	each	11.50
091	Eyelet punch for medium eyelets (item #080)	each	11.50
100c	Tell-tales, place on the headsail to help indicate correct trim	pair	2.85
184	Dacron, self adhesive, for sail corner reinforcing (gold, white, red, black, blue, green)	1370mmx250mm	9.00
186	Dacron, self adhesive, for sail corner reinforcing (FLUORO - yellow, orange, pink)	1370mmx250mm	9.60
T1-20	Sailmaking Notes - practical hints and tips		2.00

Sail identification

I-A	Class Insignia	- ISAF A Class	pair	\$ 1.65
I-EC	Class Insignia	- EC12	pair	P.O.A.
I-IOM	Class Insignia	- ISAF One Metre	pair	2.35
I-M	Class Insignia	- ISAF Marblehead	pair	1.65
I-TR	Class Insignia	- ISAF Ten Rater	pair	3.00
S-N	Sail numbers	- 0 - 9	each	1.25
S-NL	National letters	- AUS	set	3.10

Hull identification

H-N	Hull number	- 0 - 9	colour - black or white (state which)	each	\$ 1.90
H-NL	Hull national letters	- AUS	colour - black or white (state which)	set	2.95

Cord (running rigging)

D36	Dacron	white/green fleck	0.90mm Ø 36kg b.s.	20m	\$ 3.30
D59	Dacron	white/green fleck	1.25mm Ø 59kg b.s.	20m	4.40
D72	Dacron	white/blue fleck	1.40mm Ø 72kg b.s.	20m	5.50
D91	Dacron	white/blue fleck	1.60mm Ø 91kg b.s.	20m	6.50
S23	Spectra	white or yellow	0.30mm Ø 23kg b.s.	10m	3.00
S36	Spectra	yellow or green	0.45mm Ø 36kg b.s.	10m	3.60
S45	Spectra	white	0.50mm Ø 45kg b.s.	10m	5.80
S54	Spectra	yellow	0.60mm Ø 54kg b.s.	10m	5.80
S68	Spectra	white	0.70mm Ø 68kg b.s.	10m	6.45
S91	Spectra	yellow	1.00mm Ø 91kg b.s.	10m	7.20

Wire (standing rigging, hooks)

W05	Wire, s/s, for top lifts, jackstay	0.35mm single strand 20kg b.s	10m	\$ 3.90
W08	Wire, s/s, for shrouds, OM,M	0.50mm single strand 40kg b.s.	9.1m	7.20
W10	Wire, s/s, for shrouds, 36R,IOM,M,EC12	0.55mm single strand 48kg b.s.	10m	7.75
P366	Wire, s/s, for shrouds, IOM, M	0.60mm single strand	20m	18.20
W11	Wire, s/s, for shrouds, M,10R, A	0.80mm single strand 79kg b.s.	10m	14.00
W12	Wire, s/s, single strand, standing rigging	0.9mm x 0.25mm, <i>flat section</i>	10m	18.65
W13	Wire, s/s, flexible, shrouds	0.45mm Ø, 7 strand, 23kg b.s.	10m	12.65
W14	Wire, s/s, flexible, shrouds, 36R, IOM	0.60mm Ø, 7 strand, 45kg b.s.	10m	16.00
W15	Wire, s/s, flexible, shrouds,M,10R,6M,A	0.75mm Ø, 7 strand, 66kg b.s.	10m	15.35
W20	Wire, s/s, straight, for hooks & other ftgs	1.25mm Ø wire, in a coil	3m	7.45
W22	Wire, s/s, straight, for hooks & other ftgs	1.0 mm Ø wire, straight	300mm	0.50
W23	Wire, s/s, straight, for hooks & other ftgs	1.2 mm Ø wire, straight	300mm	0.80
W24	Wire, s/s, straight, for hooks & other ftgs	1.5 mm Ø wire, straight	300mm	.90
W25	Wire, s/s, straight, for hooks & other ftgs	1.8 mm Ø wire, straight	300mm	1.15

Miscellaneous

SF-16-R/B	Heat shrink tube. red or black	1.6mm Ø shrinking to 0.8mm	300mm	\$ 0.80
SF-25-R/B	For electrical	2.5mm Ø shrinking to 1.3mm	300mm	0.90
SF-35-R/B	joints and neat	3.5mm Ø shrinking to 1.8mm	300mm	1.10
SF-54-R/B	coverings over	5.4mm Ø shrinking to 2.7mm	300mm	1.40
SF-64-R/B	crimps and wire	6.4mm Ø shrinking to 3.2mm	300mm	1.60
SF-104-R/B	terminations	10.4mm Ø shrinking to 5.2 mm	300mm	2.30

Hand tools

D301	Kwik Twist for putting eye in end of W05-W11 rigging wire, up to 0.80mm wire	\$ 20.00
D353	Cut-off wheel with mandrill 1-1/4" dia.	6.60
D370	Tap 2mm and drill set (for Pekabe and Hales deck blocks)	13.15
D372	Tap 3mm and drill set	13.1
D444	Ball wrench socket handle (long), use with items #D155 & #D166	5.20
D449	Screw driver type handle for SAILSetc boom slides (104a,b,d,e,120d)	5.20

Technical information

T-HG	IOM hull gauge	measures mast rake and sheeting angles	\$ 5.20
T-RG	IOM rig gauge	measures twist, draft and boom hole spacings	7.80
TI-20	Sailmaking Notes	practical hints and tips, an ideal introduction to the craft	2.00
TI-22	Battery Notes	general care and maintenance of batteries	2.00
TI-23	Ballast Notes	what you need to know to fit and finish a ballast	2.00

Gift Vouchers

GIFT	Ideal as an all year round gift. Available to any value.
------	--

Radios and spares

S-DX5E-M1 Spektrum DX5E 2.4 Ghz	\$149.00
S-DX5E-M2 Spektrum DX5E 2.4 Ghz converted for sailboat use & binding completed	159.00
S-DX5E-R Spektrum DX5E receiver	89.95
S-DX6i Spektrum 2.4GHz radio	289.00
S-DX6i-R Spektrum 2.4GHz radio receiver (spare part)	138.70
SS-R Spektrum DX6 receiver (spare part)	95.75
SS-A Spektrum DX6 transmitter aerial (spare part)	26.00

Radio accessories

JR-C Crystals JR, 36Mhz FM (pair)	\$ 42.40
JR-CC Crystal case (holds 8 pairs)	20.25
JR-NS Neck strap for transmitter	24.20
JR-TBB Transmitter battery box JR (holds 8 AA batteries)	13.60
JR-TBL Transmitter battery lead JR with white plug	7.90
JR-TC Transmitter crystal 36 Mhz FM	21.20
BLJ-M/F Plug JR/Hitec 300mm lead with male or female (state which)	2.70
BLF-M/F Plug Futaba 300mm lead with male or female (state which)	2.70
MTM Multimeter, 3.5 digit LCD screen, ideal for boat battery check	8.95
BC-3 Battery charger Swallow 2, AC/DC, for NiCd/NiMH, Lithium, charge/discharge	165.00
TC Transmitter cover - long aerial	39.50
TC-1 Transmitter cover - short aerial 2.4 GHz	39.50

Boat electrics

JR-RC Receiver crystal 36 Mhz FM	\$ 25.50
JR-RS Receiver 36MHz RS70 auto scan synthesizer, no crystal required	124.40
JR-S7 Servo, standard JR (577)	25.00
JR-S9 Servo ball race JR Hi Torque (539)	33.00
Boat battery pack 5 cell AAA Sanyo NiMH 1000mAh 6v, heat shrink, leads	
Boat battery pack 5 cell AAA Sanyo NiMH 1000mAh 6v, heat shrink, leads, JR plug (72g)	
AP Aerial housing for boat	6.95
D345 Aerial tube (yellow) with end cap (black), 3.15mm dia. x 305mm (tube only)	2.00
HDW Hood waterproof for on-off switch (SWT)	1.70
SWT Switch toggle power on-off	2.30

Sailwinches

280ES RMG Sailwinch, drum 26mmØ, max. travel std drum 405mm, weight 134 IOM,M,10R	\$251.90
280EL RMG Sailwinch, drum 26mmØ, max. travel std drum 590mm, weight 134g EC12	251.90
380ES RMG Sailwinch, drum 32mmØ, max. travel std drum 610mm, weight 168g A	259.60
380EH RMG Sailwinch, drum 32mmØ, max. travel std drum 610mm ,weight 175g	276.10

(A winch drum of different size to the standard above can be supplied with winch)

Sailwinch accessories

D-26std RMG sailwinch drum, 26mm dia.	\$ 7.70
D-32std RMG sailwinch drum, 32mm dia.	9.35
D-42std RMG sailwinch drum, 42mm dia.	12.10
D-45zs9 RMG sailwinch Z spiral drum, 45mm dia. 9 turns	22.55
D-45zs4 RMG sailwinch Z spiral drum, 45mm dia. 4 turns	21.45
D-30zs7 RMG sailwinch Z spiral drum, 30mm dia. 7 turns	17.60
D-ST32 RMG self tensioning drum, 32mm dia.	21.45
D-ST42 RMG self tensioning drum, 42mm dia.	24.20
D-ST45zst4 RMG self tensioning Z spiral drum, 45mm dia. 4 turns	35.20
DTS RMG drum retaining thumb screw, for easier drum removal/replacement	4.40
DTS-ST RMG drum retaining thumb screw, for self-tensioning spiral ST45zst	4.40
FLASH RMG FLASH Digital voltage display, reads battery voltage from 3.8 to 12.3 volts	35.20
SLS Signal line switch, for adapting Spektrum DX6 to RMG winch	11.00

Rudders

R-01	Glass fibre with 4mm Ø stock, elipical	(TS2) IOM,M,10R	\$60.50
R-02	Carbon fibre 6% t/c w/ 4mm Ø stock, slight taper,220x70mm (OBSESSION)	IOM,M,10R	87.50
R-03	Carbon fibre 7% t/c w/ 4mm Ø stock, slight taper, 235x70mm	IOM,M,10R,A	57.50
R-04	Carbon fibre 6% t/c w/ 4mm Ø stock, parallel, 240x75mm	M,10R,A	43.00
R359z	Injection moulded 6% t/c glass filled plastic, 4mmØstock175x85mm	IOM	58.65
F-200	Fin/rudder section, machined timber, parallel, 200x70x7mm		13.35
F-300	Fin/rudder section, machined timber, parallel, 300x70x7mm,		20.00

Rudder & hull components

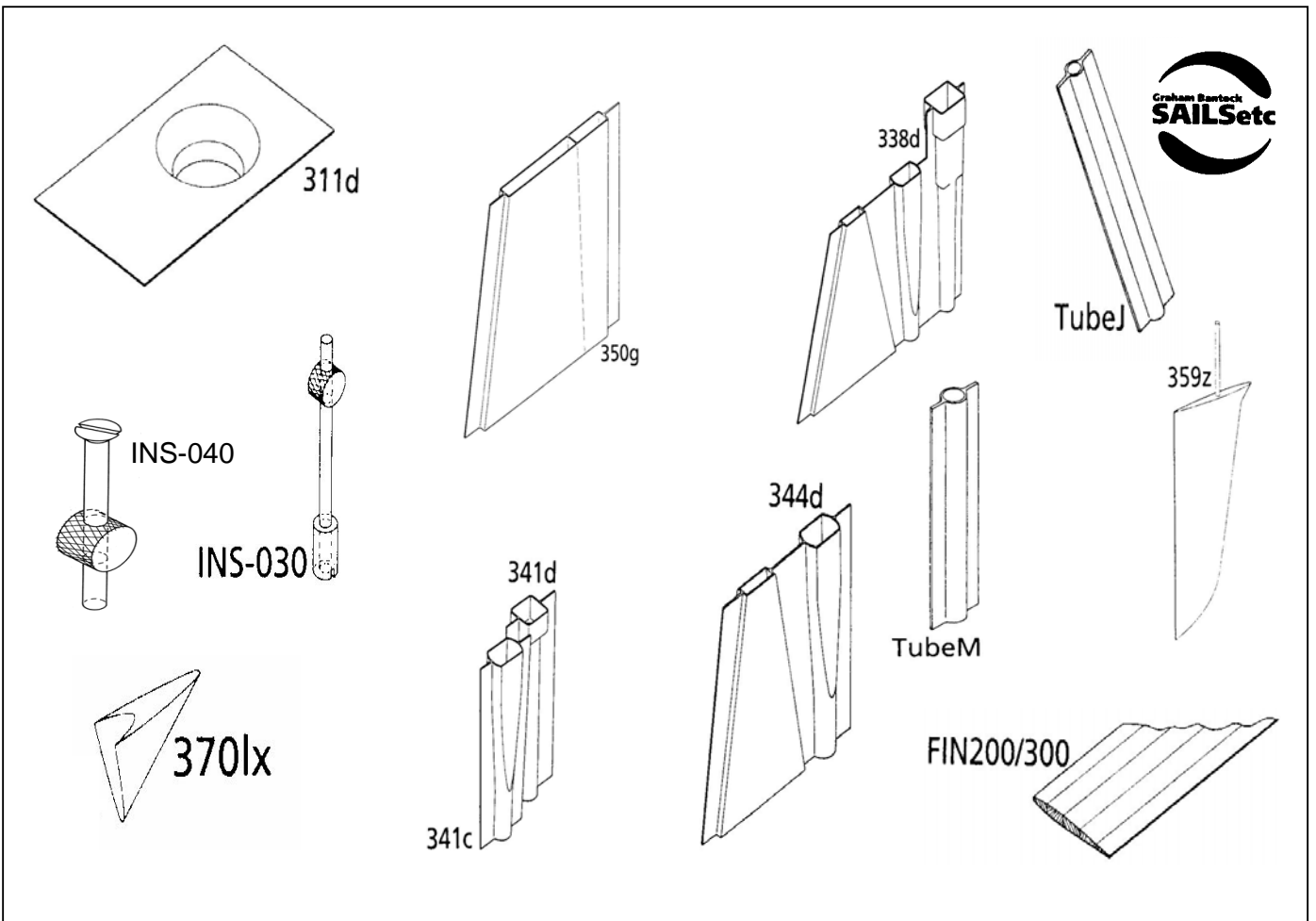
068a	Tiller arm, black anodised aluminium,	6mm Ø	\$ 2.35
068c	Tiller arm, plastic w/metal collar,	3mm Ø (can be drilled to 4mm Ø)	9.40
068-030	Tiller arm, carbon/epoxy, for	3mm Ø rudder stock	23.15
068-040	Tiller arm, carbon/epoxy, for	4mm Ø rudder stock	23.15
068-050	Tiller arm, carbon/epoxy, for	5mm Ø rudder stock	23.15
068-060	Tiller arm, carbon/epoxy, for	6mm Ø rudder stock	23.15
069-040	Rudder stock & tube, with seal	4mm Ø ss stock, plastic tube	24.40
069-050	Rudder stock & tube, with seal	5mm Ø alloy stock, plastic tube	28.25
069-060	Rudder stock & tube	6mm Ø CF stock, 8mm Ø CF tube	12.20
069e	Rudder bearing, top, under deck	for 6mm Ø rudder stock	2.85
069f	Top bearing for rudder stock	for 4mm Ø stock	12.40
069g	Top bearing for rudder stock	for 6mm Ø stock	12.40
069t	Tube for rudder stock, brass	4mm/ 5/32" i.d. x 100mm	1.80
D155	Tiller arm, plastic w/metal collar, + D121	4mm Ø with s/s cap screw	7.10
D166	Tiller arm, plastic w/metal collar	4mm Ø with s/s cap screw	5.75
D502+	Steering rod exit tube and spacer + instructions		9.95
Tube45	Alloy tube 5mm x 100mm, bond to 4mm rudder stock for 5mm i.d. trunking		2.50
Tube56	Alloy tube 6mm x 100mm, bond to 5mm rudder stock for 6mm i.d. trunking		4.95

Steering components

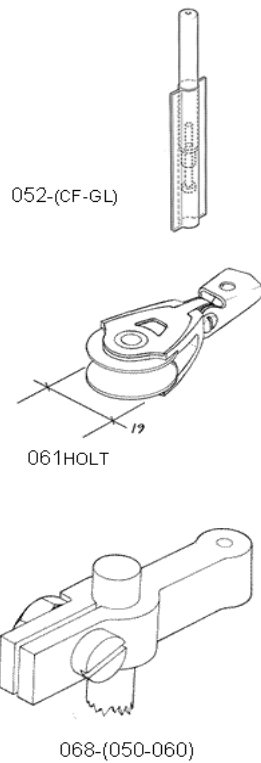
066a	Servo/tiller arm ball joint	for 3 & 5.6 mm i.d. tube	\$ 6.40
066b	Servo/tiller connector tube	alloy tube, 5.6mm i.d. x 300 mm	7.70
066c	Servo/tiller connector tube, complete	comprises 066b & 066d	32.10
066d	Servo/tiller connector tube ends	pair of end fittings, LH & RH thread	24.40
067b	Servo arm extension, stainless steel	for Futaba and Multiplex arms	7.00
D121	Connector, fits tiller arm or servo arm	to suit item #D172 (2)	2.90
D172	Steering rod, threaded one end	1.78mmØx305mm	1.40
D602	Connector, nylon, threaded,	to suit item #D172 (2)	1.50
D815	Connector with safety lock, threaded	to suit #D172 (2)	4.20
JR-SA	Servo arm JR, 11-21mm adjustment		1.70
SA-1	Steering assembly, single arm tiller (D166), steering rod (D172), connectors (D121+D602), instruction sheet	IOM	9.20
SA-2	Steering assembly, single arm tiller (D166), steering rod (D172), connectors (D121+D815), instruction sheet	M,10R	10.55
SA-3	Steering assembly, single arm tiller (D166), 300mm lightweight tube (066b), L/H and R/H threaded ends (066d), instruction sheet	A, EC12	37.60

Hull fittings kit EC12 (may vary to personal requirements, please check before ordering)

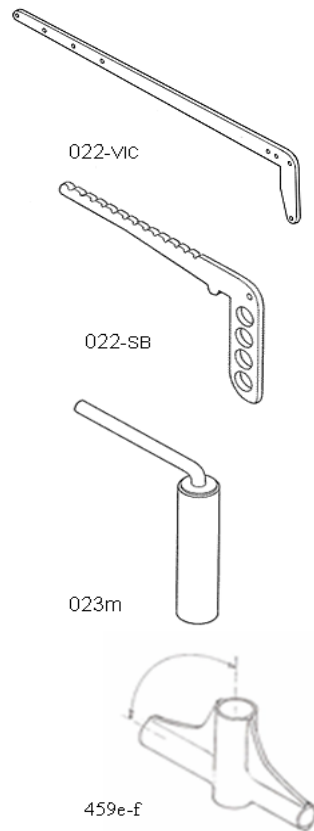
Includes screw top pot, mainsheet post, steering assembly.	HK-01	\$P.O.A.
--	-------	----------



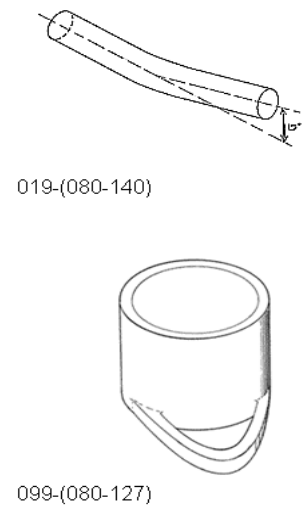
Hull and Deck Fittings



Mast fittings



Boom fittings



Keel Fins

F-01	Carbon fibre 7.5% t/c, tapered	(TS2)	IOM	\$145.00
F-02	Carbon fibre 6% t/c, parallel edges, 85mm cord	(OBSESSION)	IOM	212.00
F-03	Carbon fibre 6.5% t/c, slight taper, 90-75mm cord	(RYSA)	IOM	172.00
F-04	Carbon fibre 6% t/c, parallel, 760x95mm primer finish	(RYSA)	M,10R	186.00
F-05	Carbon fibre 6% t/c, parallel, 760x95mm, natural finish	(RYSA)	M,10R	215.00
F-200	Fin/rudder section, machined timber, parallel, 200x70x7mm	(SAILSetc)		13.35
F-300	Fin/rudder section, machined timber, parallel, 300x70x7mm	(SAILSetc)		20.00
370lx	Fillet, to fit to leading edge of fin or rudder	(SAILSetc)		27.00
INS-SEAT	Ballast retaining nut seat	(SAILSetc)		11.55
INS-030	Fin insert bottom, for attaching keel bulb to keel fin	(SAILSetc)		18.00
INS-040	Fin insert top, for attaching keel fin to hull	(SAILSetc)		14.80
INS-080	Fin insert top and bottom, as above, for heavy keel bulb	(SAILSetc)	A	33.25

Keel Bulbs

B-01	Precision cast with slot, 2.4kg	(OBSESSION)	IOM	\$ 92.00
B-02	Precision cast with slot, circa 2.4kg	(RYSA)	IOM	83.60
B-03	Cast with slot, some finishing required, circa 3.15 kg	(RYSA)	M	97.90
B-035	Cast with slot, some finishing required, circa 3.75 kg	(RYSA)	M	103.40
B-04	Cast with slot, some finishing required, circa 4.30 kg	(RYSA)	10R	110.00

Hull / keel fin box / mast tube mouldings

M-01	Fin box, glass fibre	fits fin F-02	(RYSA)	IOM	\$ 22.00
M-02	Fin box, glass fibre	fits fin F-03	(RYSA)	IOM	20.00
M-03	Fin box, carbon fibre	fits F04,05	(RYSA)	M,10R	21.50
M-04	Fin box, glass fibre	145x25-52x10mm internal thickness	(RYSA)	Generic	29.00
M-05	Fin box, carbon fibre	145x25-52x10mm internal thickness	(RYSA)	Generic	36.00
311d	Screw top pot recess	fit to deck for perfect fit of #054	(SAILSetc)	Various	118.00
311p	Universal mounting	for #054, servo and winch.	(SAILSetc)	IOM,M,10R	129.10
338d	Fin box/mast tube	for shroudless + swing rig	(SAILSetc)	M,10R	169.80
341c	Mast tube	identical to aft tube of 338d	(SAILSetc)	M,10R	78.25
341d	Mast tube	identical to forward tube of 338d	(SAILSetc)	M,10R	76.30
344d	Fin box/mast tube fits	fin 370c, rake mast using items 144e	(SAILSetc)	IOM	156.30
350f	Fin box	fits fins 350d/e	(SAILSetc)	6M,A	192.15
350g	Fin box/mast tube	fits fins 350d/e and 350h	(SAILSetc)	6M,A	220.55
Tube-J	Tube, glass or c'f	for foredeck swivel, use with 052a, 6mm ID	(SAILSetc)		14.80
Tube-M	Tube, glass or c'f	for mainsheet post, use with 052mt, 9.2mm ID	(SAILSetc)		14.80

Deck kits - IOM (may vary to personal requirements, please check before ordering)

Deck hardware including ball race turning blocks, eye bolts, tiller arm, spectra braided sheet line, s/s spring, velcro to secure batteries and receiver, along with the toggle on-off switch and waterproof hood.

DK-01 \$ 67.00

Rig kits - IOM

Kit includes SAILSetc alloy tube (11mm Ø) natural anodised, SAILSetc jib and main boom kits (except RK-01 has lightweight jib boom), gooseneck/vang, counterbalance weight, spreaders, masthead plug, backstay crane, rigging screws, bowsies, s/s fasteners, spectra braided line, rigging wire, bands for mast measurements, plus associated drawings and instruction sheets. We also offer alternatives and/or extras, depending on your individual requirements (please enquire at time of ordering).

RK-01	A Rig Kit	\$209.00
RK-02	B Rig Kit	209.00
RK-03	C Rig Kit	209.00
RK-031	C Rig Kit (based on using 1m mast length)	193.00

Deck kits - EC12

Deck hardware including ball race turning block, eye bolts, spectra braided sheet line, s/s spring, toggle on-off switch and waterproof hood.

DK-02 \$P.O.A.

Rig kits - EC12

Kit includes SAILSetc alloy tube (12.7mmØ) natural anodised, super-lightweight (black anodised) jib and main boom kits, gooseneck/vang, spreaders, masthead plug, backstay crane, rigging screws, bowsies, s/s fasteners, spectra braided line, rigging wire, bands for mast measurements, plus associated drawings and instruction sheets. We also have alternatives and/or extras depending on your individual requirements (please enquire at time of ordering).

RK-04 A, B or C rig kit

\$P.O.A.

Boom kits - M, 10R, 6M, A, EC12

150-120	Main boom kit	12/10 mm Ø high mod c'f tube	500mm	M,10R,6M	\$50.35
150-120K	Main boom kit	12/10 mm Ø Kilwell c'f tube	500mm	M,10R,6M	36.25
150-140	Main boom kit	14/12 mm Ø high mod c'f tube	600mm	A	62.10
150-140K	Main boom kit	14/12 mm Ø Kilwell c'f tube	600mm	A	44.30
151-080*	Jib boom kit	08mm Ø high mod c'f tube	500mm	M,10R	51.30
151-080K*	Jib boom kit	08mm Ø Kilwell c'f tube	500mm	M,10R	41.30
151-100*	Jib boom kit	10mm Ø high mod c'f tube	500mm	10R,6M	66.60
151-100K*	Jib boom kit	10mm Ø Kilwell c'f tube	500mm	10R,6M	56.40
151-120*	Jib boom kit	12mm Ø high mod c'f tube	600mm	A A rig	105.00
151-120K*	Jib boom kit	12mm Ø Kilwell c'f tube	600mm	A A rig	84.75
151-140*	Jib boom kit	14mm Ø high mod c'f tube	600mm	A B-C rig	125.20
151-140K*	Jib boom kit	14mm Ø Kilwell c'f tube	600mm	A B-C rig	104.40
190-100	Main boom kit	10mm Ø super light straight	550mm	EC12 A-B-C rig	41.20
191-100*	Jib boom kit	10mm Ø super light straight	500mm	EC12 A-B-C rig	72.95

Boom kits - 10M

160-kit	Main boom kit	SAILSetc spar section and fittings	350mm	A-B-C rig	\$ 32.75
161-kit*	Jib boom kit	super-light boom kit	400mm	A rig	39.90
161 _{RYSA1}	Jib boom kit	super-light boom kit ALTERNATIVE	400mm	A rig	62.00
162-kit*	Jib boom kit	SAILSetc spar section and fittings	400mm	A-B-C rig	40.60
163-kit	Main boom kit	super-light boom kit	400mm	A rig	29.50

Booms completed - 10M

* Counterbalance weight not included, please order separately. Can be supplied with ball race swivels (pg 29)

164	Main boom	super-light boom, ready to rig	A rig	\$ 47.30
170-350	Main boom	SAILSetc spar section, ready to rig	A-B rig	43.50
170-310	Main boom	SAILSetc spar section, ready to rig	C rig	43.50
171-400*	Jib boom	super-light boom, almost ready to rig	A rig	56.35
172-400*	Jib boom	SAILSetc spar section, ready to rig	A rig	57.00
172-350*	Jib boom	SAILSetc spar section, ready to rig	B rig	56.35
172-310*	Jib boom	SAILSetc spar section, ready to rig	C rig	54.95

Boom sections and fitting packs

160a	Main boom	fitting pack for 163a-d	\$ 19.20
162a*	Jib boom	fitting pack for 163a-d	25.20
163a	Boom	SAILSetc section 350mm, natural anodised	13.55
163b	Boom	SAILSetc section 400mm, natural anodised	15.40
163c	Boom	SAILSetc section 500mm, natural anodised	21.70
163d	Boom	SAILSetc section 750mm, natural anodised	31.40
163e	Boom, super-light, 10mm Ø alloy tube	400mm, natural anodised	13.20
254	Boom, super-light, 08mm Ø alloy tube	385mm, colour to be confirmed	4.40
255	Boom, super-light, 08mm Ø alloy tube	770mm, colour to be confirmed	12.00
256	Boom, super-light, 10mm Ø alloy tube	400mm, black anodised	13.20
257	Boom, super-light, 10mm Ø alloy tube	835mm, black anodised	26.00

Mast and spar material

Alloy tubes

AHT1082	High tensile natural anodised 0.6mm wall thickness	10.8mmx2000mm	\$ 36.00
AHT10825	High tensile natural anodised 0.6mm wall thickness	10.8mmx2500mm	\$ 45.00

SAILSetc

ART6410	Natural anodised 0.7mm wall thickness	6.4mm x 1000mm	\$ 10.70
ART6420	Natural anodised 0.7mm wall thickness	6.4mm x 2000mm	20.50
ART1110	Natural anodised 0.6mm wall thickness	11.0mm x 1000mm	18.70
ART1120	Natural anodised 0.6mm wall thickness	11.0mm x 2000mm	36.55
ART12810	Natural anodised 0.5mm wall thickness	12.8mm x 1000mm	17.85
ART12820	Natural anodised 0.5mm wall thickness	12.8mm x 2000mm	34.75

Alloy groovy ** SAILSetc

AG11110	Natural anodised .5mm wall thickness	11.1mm x 1000mm	\$ 32.00
AG11120	Natural anodised .5mm wall thickness	11.1mm x 2000mm	58.85
AG12710	Natural anodised .6mm wall thickness	12.7mm x 1000mm	31.20
AG12720	Natural anodised .6mm wall thickness	12.7mm x 2000mm	57.00
AG14520	Natural anodised .75mm wall thickness	14.5mm x 2000mm	82.90
AG14525	Natural anodised .75mm wall thickness	14.5mm x 2500mm	91.85

Carbon fibre groovy **

HIGH MODULUS

**** the end 50mm may be imperfect**

CFG12720	1.0mm wall thickness	SAILSetc	12.7mm x 2000mm	213.00
CFG12725	1.0mm wall thickness	SAILSetc	12.7mm x 2500mm	258.55

Carbon fibre tubes

HIGH MODULUS

For 2007 we have switched to using carbon tubes made on mandrels because the pultrusion suppliers have been unable to maintain the same stiffness quality. These tubes are approximately 2 to 3 times as stiff as commonly available kite tubes and remain streets ahead of any alternative.

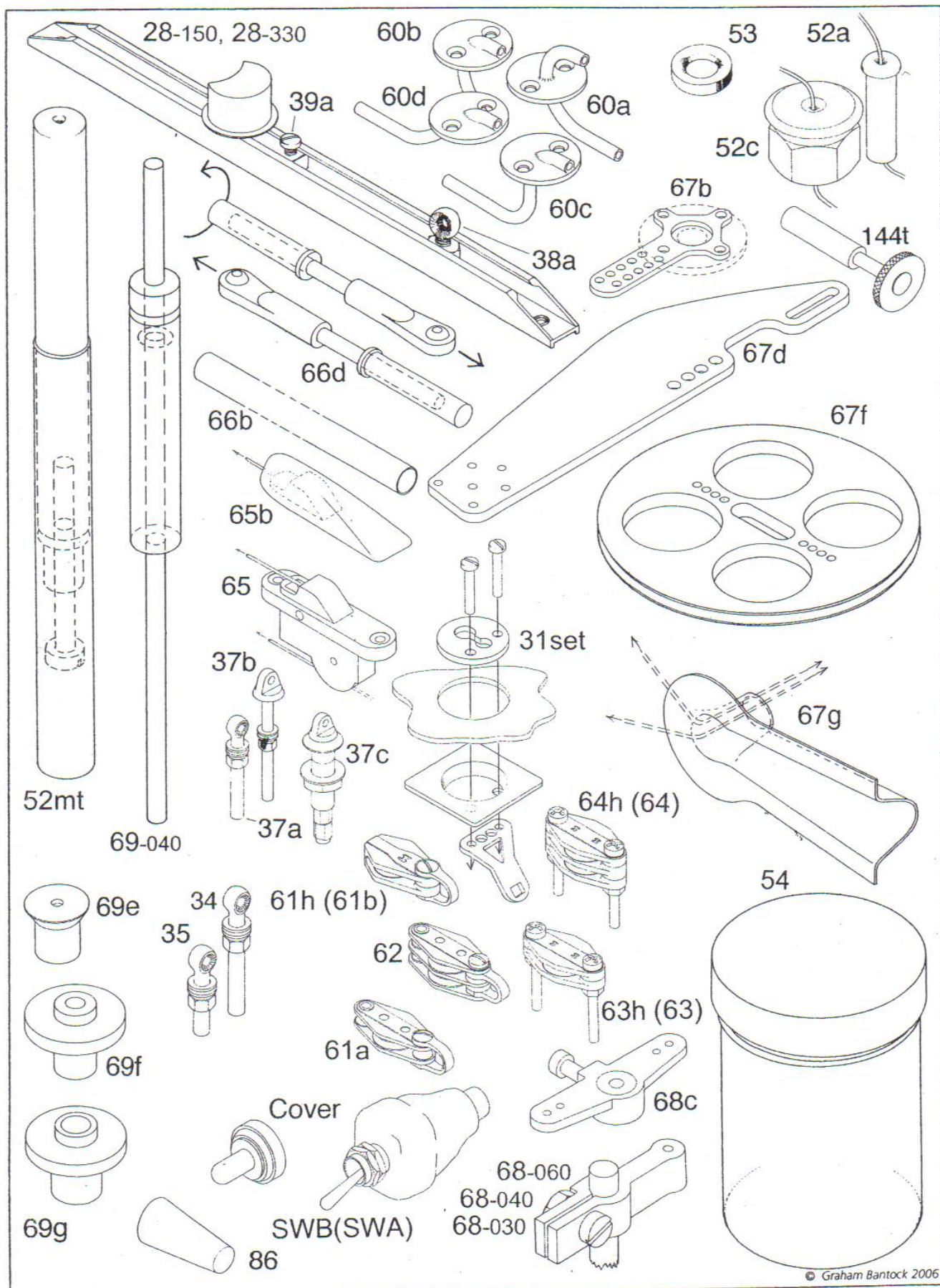
Care in their use prevents the likelihood of splitting. Overlap the joints by four times the diameter of the smaller tube and reinforce where there are high local loads by bonding a piece of small tube inside. Wrap the tubes with carbon tow/epoxy resin where holes are drilled for attaching rigging.

CFT 0605 NEW	1.5mm wall thickness	06mm x 500mm	\$ 16.00
CFT 0610 NEW	1.5mm wall thickness	06mm x 1000mm	31.95
CFT 0805	1.0mm wall thickness	08mm x 500mm	22.00
CFT 0810	1.0mm wall thickness	08mm x 1000mm	43.20
CFT 1005	1.0mm wall thickness	10mm x 500mm	25.00
CFT 1010	1.0mm wall thickness	10mm x 1000mm	49.00
CFT 1205	1.0mm wall thickness	12mm x 500mm	30.00
CFT 1210	1.0mm wall thickness	12mm x 1000mm	58.50
CFT 1405	1.0mm wall thickness	14mm x 500mm	33.00
CFT 1410	1.0mm wall thickness	14mm x 1000mm	65.95
CFT 1605 NEW	1.0mm wall thickness	16mm x 500mm	36.00
CFT 1610 NEW	1.0mm wall thickness	16mm x 1000mm	71.45

Carbon fibre tube (Kilwell)

INTERMEDIATE MODULUS

CFTK 0805	1.0mm wall thickness	Kilwell	08mm x 500mm	\$ 12.00
CFTK 0810	1.0mm wall thickness	Kilwell	08mm x 1000mm	22.50
CFTK 1005	1.0mm wall thickness	Kilwell	10mm x 500mm	15.75
CFTK 1010	1.0mm wall thickness	Kilwell	10mm x 1000mm	29.95
CFTK 1205	1.0mm wall thickness	Kilwell	12mm x 500mm	18.00
CFTK 1210	1.0mm wall thickness	Kilwell	12mm x 1000mm	34.20
CFTK 1405	1.0mm wall thickness	Kilwell	14mm x 500mm	22.50
CFTK 1410	1.0mm wall thickness	Kilwell	14mm x 1000mm	43.50
CFTK (3)	1.0mm wall thickness	Kilwell	10,12 & 14mm x 1000mm	102.25



Hull and deck fittings

028-330	Deck track, 330mm	(supplied with stainless steel fixing screws & nuts)	\$ 10.45
028-500	Deck track, 500mm	" " " " "	12.85
031set	Plate, cup & connector (2 of each for one hull)	to take 31s rigging screw	24.70
034	Eyebolt	M3.5 x 25mm	3.15
035	Eyebolt	M3.5 x 15mm	3.15
037a	Eyebolt	M3 x 20mm	3.15
037b	Eyebolt, flat sides	M3 x 20mm	3.15
037c	Eyebolt, swivelling version	Pekabe (#P453), M3/M5	7.60
038a	Eyebolt, use with deck tracks(028-150,330,500)	M3.5 x 6mm	2.85
038b	Track slide with eyebolt	with screw for locking in place	9.65
038c	Track slide with eyebolt	with lock wheel	14.85
038d	Track slide with swivelling hook on ball race	with lock wheel	26.00
039a	Track slide for mast heel fitting	use with deck track 028-150,330,500	2.85
052a	Fairlead, Acetal	to fit 6mm internal Ø	3.00
052c	Fairlead, Acetal alternative to 060b/c/d	to bolt through 10mm internal Ø	9.15
052cf	Mainsheet post as 052mt	with carbon/epoxy trunking	37.85
052gl	Mainsheet post as 052mt	with glass/epoxy trunking	37.85
052mt	Mainsheet post, with metal trunking	Acetal post, height adjustable	29.55
053	Fairlead PTFE ring	for adjustable mainsheet position	3.00
054	Screw top pot, 23 grams, 67mm Ø x 83mm deep	container for receiver & batteries	6.00
054L	Lid for screw top pot	(spare part)	2.90
060a	Sheet lead, raised	8mm offset above/below deck	22.20
060b	Sheet lead, flush	15mm offset below deck	22.20
060c	Sheet lead, flush	15mm offset below deck	22.20
060d	Sheet lead, flush	10mm offset below deck	22.20
060z	Sheet lead, raised	outlet at 60° to horizontal	21.60
061a	Single block with shackle and becket	(Pekabe P510)	15.70
061b	Single block with shackle	(Pekabe P515)	15.70
061h	Single block with shackle	(Hales)	17.80
061hw	Single block only (without shackle)	(Hales)	15.00
061-HOLT	Single deck block, large dia. sheave	for RMG sheet loop system	29.90
062	Double block with shackle and double becket	(Pekabe P520)	18.50
063	Single deck block	(Pekabe P512)	15.70
063h	Single deck block	(Hales)	16.50
064	Double deck block	(Pekabe P522)	18.50
064h	Double deck block	(Hales)	21.70
065	Through deck block, 2 sheaves with spacers	(Pekabe P472)	21.45
065b	Cover for through deck block, item 065	silicone rubber	12.85
067c	Quick release system for r.c. installation	for winch & servo, with drawing	16.95
067d	Arm for Hitec sail control servo	carbon, adjustable, 75/85 mm	17.60
067f	Drum for Hitec sail control servo	Acetal, 100 mm o.d., 90mm i.d.	61.70
067g	Fairlead in glass or c'f	use with 067f	16.00
086	Bung, tapered, for drain hole	20 x 8>4mm Ø	1.20
144f	Mast ram, bulkhead/deck mounted	for 12.7mm Ø mast	8.60
144g	Mast ram, bulkhead/deck mounted	for 12mm Ø mast	8.60
144t	Mast ram, bulkhead/deck mounted	for any mast	19.90
145-110	Mast ram, deck mounted	for 10.8 and 11mm Ø mast	23.40
145-127	Mast ram, deck mounted	for 12.7mm Ø mast	23.40
145-140	Mast ram, deck mounted	for 14mm Ø mast	23.40
184	Dacron self adhesive, 1370mm x 250mm	for deck patches (straight colours)	9.00
186	Dacron self adhesive, 1370mm x 250mm	for deck patches (fluoro colours)	9.60
188	Velcro 25mm x 200mm	industrial quality	1.50

Hull and deck fittings, continued

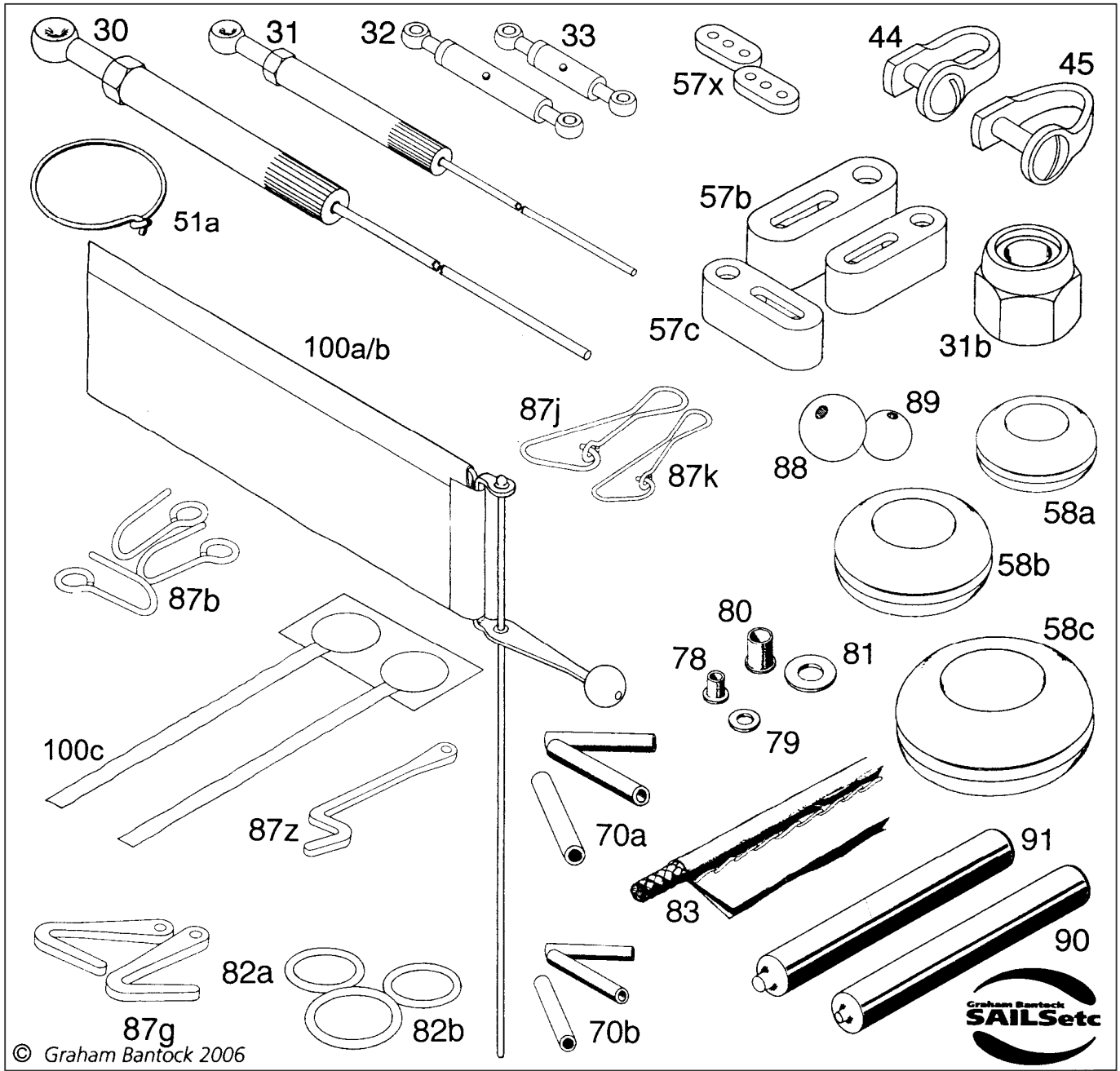
200	Bow bumper - IOM(TS2), L 80mm,W13mm top,W(15mm from bottom)10mm, white	\$15.00
200-01	Bow bumper - M(Paradox) L105mm,W14mm top,W(15mm from bottom)12mm, white	19.55
200-02	Bow bumper - M(Berlioz) L 80mm,W23mm top,W(15mm from bottom)14mm, grey	19.55
200-03	Bow bumper - A (Sword) L210mm,W20mm top,W(25mm from bottom)22mm, white	29.35
200-04	Bow bumper - IOM (Obsession) - will fit most IOM's	
	L 97mm,W14mm top,W(15mm from bottom)11mm, white	17.50
200-05	Bow bumper - M(Strad) L 96mm,W8mm top, W(15mm from bottom)11mm, white	19.55
204	Mast step (TS2) for #202,203,205 with prov. for keel fin bolt & main sheet block	21.00
212	Deck plate	chromed brass, with eye 4.60
214	Jib rack, 60mm x 6mm	chromed brass, attach jib pivot to 6.80
225b	Mast step, 50x12x3mm, 5mm Ø hole	black anodised aluminium 7.30
HC-S	Hatch cover w/clear lid and 'O' ring, small	od 145, id 102, cut out 112mm, wt100g 13.20
HC-M	Hatch cover w/clear lid and 'O' ring, medium	od 171, id 130, cut out 139mm, wt140g 14.80
HC-L	Hatch cover w/clear lid and 'O' ring, large	od 196, id 152, cut out 164mm, wt170g 18.20

Rigging and related fittings

030	Rigging screw, single end	M3.5	each	\$ 6.95
031	Rigging screw, single end	M3	each	6.80
031b	Self locking nut, for #031 (NN3)	M3, stainless steel,	10	4.50
031s	Rigging screw, ball ended NEW	M3, snap into item 31set, see pg	each	18.25
032	Rigging screw, double ended	23-30mm	each	5.15
033	Rigging screw, double ended	17-20mm	each	5.15
051a	Luff rings, state mast diameter		each	1.30
057a	Bowsies	mixed pack of 57b & 57c	10	5.80
057b	Bowsies	15 x 4mm	10	5.00
057c	Bowsies	12 x 3mm	10	6.40
057x	Bowsies	7 x 3mm, stainless steel	10	9.65
061hs	Shackle, wide dee,	(Hales)	each	4.10
070a	Crimps, medium	1.6mm internal Ø	50	8.20
070b	Crimps, small	1.2mm internal Ø	50	7.45
087b	Hook, stainless steel, wire	15 x 6mm	5	4.55
087g	Hook, stainless steel, laser cut, small	15 x 7mm	each	2.35
087h	Hook, stainless steel, laser cut, mdm	17 x 8mm	each	2.60
087j	Clip hook	24 x 7mm	5	1.40
087k	Clip hook	20 x 6mm	5	1.40
088	Ball, plastic with hole	8mm Ø	20	3.35
089	Ball, plastic with hole	5mm Ø	20	3.60
122	Split ring s/s, 6.00mm i.d.,	removable ring	5	0.70
123	Split ring s/s, 6.50mm i.d.,	removable ring	5	0.70
154e	Elastic (for sheet tension)	1.00mm Ø single strand	5m	3.15
156	Tension spring, s/steel, 30mmx5mm	loop at each end for sheet attachment	each	3.00
158	Swivel ball raced	for jib boom	each	5.50
160fc	Fishing clip		pair	.40

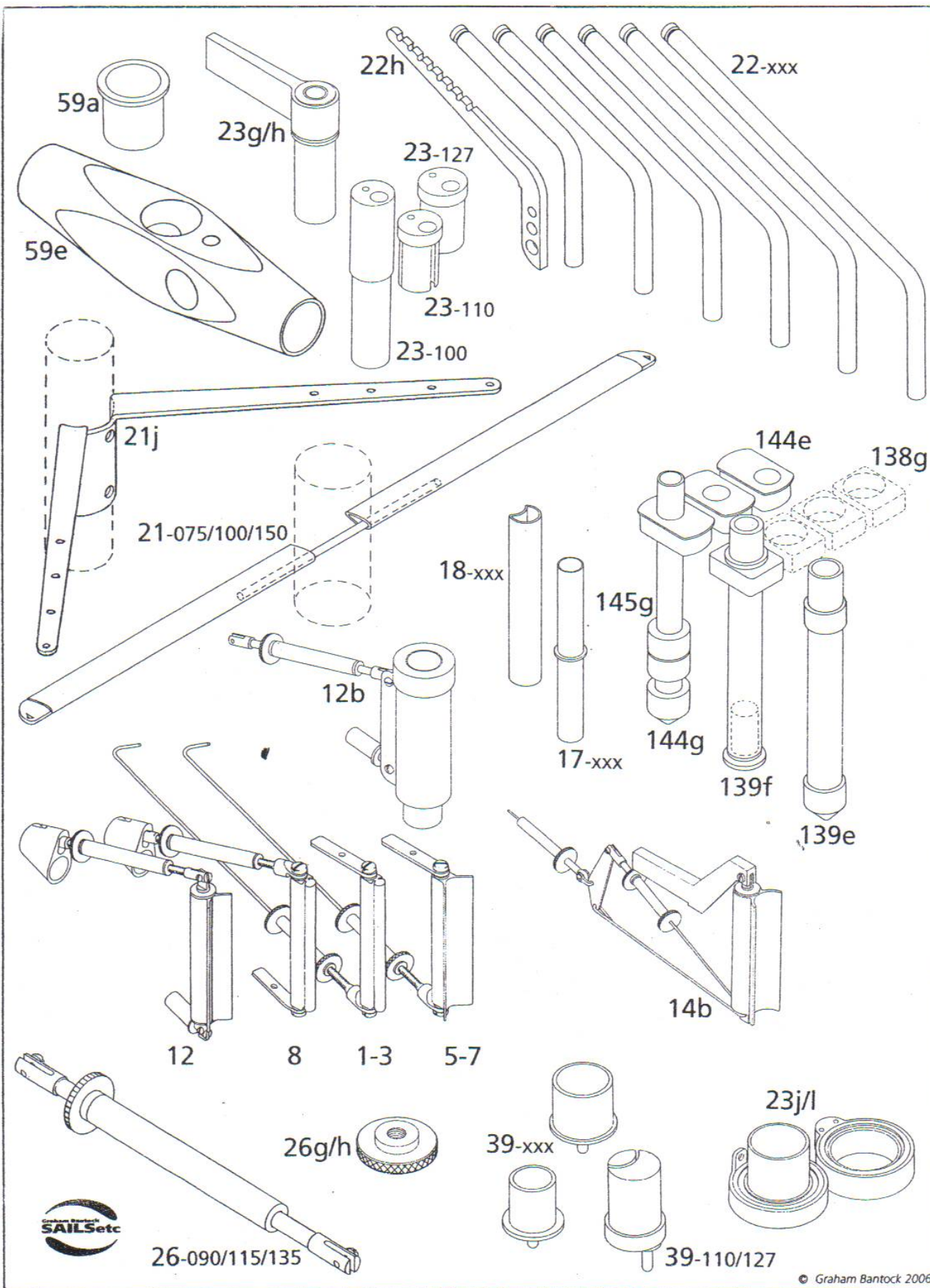
Rig plans

RP14c	M swing rig	+ instructions, as supplied with '92/'95 kits	\$ 7.80
RP15c	M shroudless rig	+ instructions, suitable for ROK, PRIME NUMBER & PRIZM etc	10.45
RP15d	M shroudless rig	+ instructions, suitable for 2007 Prime Number & Diamond, etc	20.55
RP16d	IOM rig	+ instructions, as current rigging packs with full updates	8.50
RP30	6M/10R rigs	+ instructions, as supplied with rigging packs	7.80



Mast fittings

001	Gooseneck/ boom vang	for alloy GROOVY	36R,IOM	\$ 34.70
002	Gooseneck/ boom vang	for alloy GROOVY	M,10R,6M,EC12	40.50
003	Gooseneck/ boom vang	for alloy GROOVY	A	52.00
004	Gooseneck/ boom vang	for CF GROOVY	M,10R,6M	40.50
005	Gooseneck/ boom vang	for round mast	36R,IOM	39.85
006	Gooseneck/ boom vang	for round mast	M,10R,6M,EC12	41.70
007	Gooseneck/ boom vang	for round mast & CF GROOVY	A	55.25
008	Gooseneck/compression strut	for alloy GROOVY	M,10R	52.15
009	Gooseneck/compression strut	for CF GROOVY	M,10R	52.00
010	Gooseneck/compression strut	for round mast	M,10R	59.35
011	Gooseneck/ boom vang	ball raced, to fit SAILSetc boom	IOM,EC12	109.20
012	Gooseneck/compression strut	ball raced	M,10R	125.95
012b	Gooseneck/compression strut	ball raced, rotates around 14mm mast	M,10R	162.55
013	Gooseneck/vang strut	ball raced	6M,A	145.85
014b	Gooseneck/vang strut	ball raced, heavy duty version	A, AC/12	203.40
017-080	Joiner for round tube C'F	for 8mm Ø		7.95
017-100	Joiner for round tube C'F	for 10mm Ø		14.80
017-120	Joiner for round tube C'F	for 12mm Ø		14.80
018-105	Joiner for groovy C'F	for 10.5mm Ø		7.80
018-111	Joiner for groovy alloy	for 11.1mm Ø		7.00
018-127	Joiner for groovy alloy	for 12.7mm Ø		2.60
018-127c	Joiner for groovy C'F	for 12.7mm Ø		7.70
018-145	Joiner for groovy alloy	for 14.5mm Ø		7.70
018-154	Joiner for groovy C'F	for 15.4mm Ø		8.65
021-075	Spreader kit	aerofoil section, 2x75mm long	IOM,M	14.60
021-100	Spreader kit	aerofoil section, 2x100mm long	M,10R,6M	17.75
021-150	Spreader kit, carbon coated	aerofoil section, 2x150mm long	A, AC/12	59.10
021f	Spreader kit, round, chromed	2x90mm, 1.6mm mast rod	IOM	9.50
021g	Spreader kit, round, chromed	2x90mm, 2.0mm mast rod	M,IOM,EC12	9.50
021h	Spreader kit, round black alum.	2x100mm, 3mm threaded mast rod	M,10R,EC12	10.15
021j	Diamond stays, stainless steel	70mm max, cut to 40/50/60 mm		23.15
021k	Diamond stays ,round alum.	2x75mm, mast fitting and arms		11.30
021l	Diamond stays, kit	021k + rigging screw/wire/crimps/instructions		23.00
021m-110	Spreader kit, clip to mast	for 10.8-11.mm Ø, black plastic body (no drilling reqd)		15.20
021m-120	Spreader kit, clip to mast	for 12mm Ø, black plastic body (no drilling reqd)		15.20
021m-127	Spreader kit, clip to mast	for 12.7mm Ø, black plastic body (no drilling reqd)		15.20
021m-140	Spreader kit, clip to mast	for 14mm Ø, black plastic body (no drilling reqd)		15.20
022-025	Backstay crane, 4.8 Ø alum.	25mm, from aft side of mast to backstay		7.45
022-045	Backstay crane, 4.8 Ø alum.	45mm “ “ “		7.45
022-055	Backstay crane, 4.8 Ø alum.	55mm “ “ “		7.45
022-065	Backstay crane, 4.8 Ø alum.	65mm “ “ “		7.45
022-075	Backstay crane, 4.8 Ø alum.	75mm “ “ “		7.45
022-040	Backstay crane, stainless steel	20-40mm, adjust. length, fits 023-110 & 023-127		7.45
022-100	Backstay crane, carbon/epoxy	100mm for 15.4mm CF GROOVY mast		36.00
022-SB	Backstay crane, stainless steel	for 14.5mm alloy groovy mast, length 63mm		7.45
022-VIC	Backstay crane, stainless steel	for 4.6mm i.d. mast, length 100mm	VICTORIA	6.95
023-100	Masthead fitting	for 10mm Ø CF tube	M,10R	22.60
023-110	Masthead fitting	for 11.1mm Ø round or alloy GROOVY	36R,IOM	3.25
023-127	Masthead fitting	for 12.7mm Ø round or alloy GROOVY	36R,IOM	3.25
023g	Masthead fitting,with ball races	for 10mm Ø round CF tube only	M,10R	51.40
023h	Masthead fitting,with ball races	for 12mm Ø round CF tube only	M,10R	51.40
023j	Tack fitting, with ball race	for 11.1mm Ø round tube only		36.60
023l	Tack fitting, with ball race	for 12mm Ø round tube only	USA1M,M	25.10



Mast fittings, continued

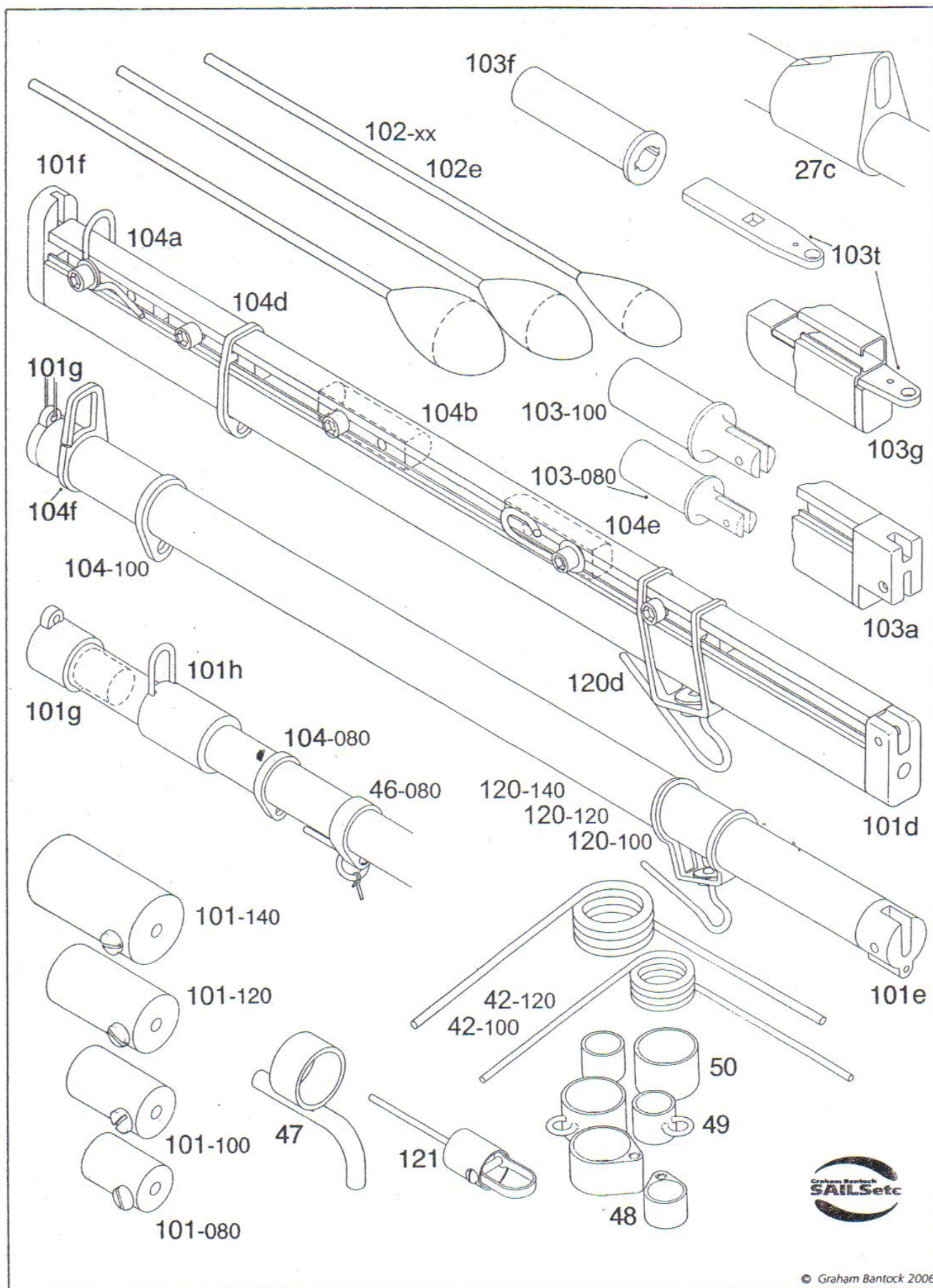
023m	Head fitting	for 12.7 & 15.4 Ø carbon groovy mast	\$ 31.30
026-035	Lock wheel, M3.5	as used on boom vang	2.20
026-040	Lock wheel, M4	as used on boom vang	2.20
026-090	Compression strut, 70- 90mm	(revised design with Acetal	24.40
026-120	Compression strut, 90-120mm	strut and length between	24.40
026-140	Compression strut, 110-140mm	screws in the range indicated)	24.40
039-100	Heel fitting	for 10mm Ø carbon tube	18.25
039-110	Heel fitting	for 11.0 Ø round or 11.1 Ø alloy GROOVY	8.10
039-127	Heel fitting	for 12.7 Ø round or 12.8 Ø alloy GROOVY	8.10
039-140	Heel fitting	for 14mm Ø carbon tube	18.25
039-145	Heel fitting	for 14.5 Ø alloy GROOVY	6.65
059a	Adaptor	for swing rig block (059e) to fit 12.7mm Ø mast	10.90
059e	Swing rig block	for 14mm Ø, with transverse hole	33.40
100a	Masthead wind indicator	standard, light & free moving	40.00
100b	Masthead wind indicator	deluxe, with ball bearings	62.00
138g	Mast/deck blocks, 14 Ø (set)	for swing rig and 338d/341d	29.55
139e	Mast bearings, PTFE (pair)	heel + upper bearing for swing rig, 12.7/14Ø	6.25
139f	Heel fitting, 14 Ø	with ball race, for swing rig + 338d/341d	70.00
144-110	Heel fitting	for 11.0/11.1mm Ø	1.55
144-127	Heel fitting	for 12.7/12.8mm Ø	1.55
144-140	Heel fitting	for 14mm Ø	1.55
144e-110	Mast/deck blocks set + heel	for 11.0/11.1mm Ø	4.65
144e-127	Mast/deck blocks set + heel	for 12.7/12.8mm Ø	6.25
144e-140	Mast/deck blocks set + heel	for 14.0mm Ø	6.25
162mh	Mainsail headboard arm	rotating	2.00
202	Mast plug lower (heel)	for 12.7mm Ø round/groovy mast (TS2) IOM	4.70
203	Mast plug lower (heel)	for 11.1mm Ø round/groovy mast (TS2) IOM	4.70
205	Mast plug lower (heel)	for 10.8mm Ø round mast (TS2) IOM	4.70
206-108	Mast plug (shrouds)	for 10.8mm Ø round mast	2.75
206-110	Mast plug (shrouds)	for 11.1mm Ø round/groovy mast	2.75
206-127	Mast plug (shrouds)	for 12.7mm Ø round/groovy mast	2.75
221c	Curved base plate	for mast and boom, chromed brass	7.30
406	Tang, for the attachment of	fittings or anchor points to hull/mast (pair)	3.30
459e	Swing rig block	for 14mm Ø mast 90° M, 10R	85.65
459f	Swing rig block	for 14mm Ø mast 84° M, 10R	85.65

Mast fittings - gooseneck spare part

001-SP	Boom vang component only	for gooseneck #001	\$ 13.00
002-SP	Boom vang component only	for gooseneck #002	13.00
003-SP	Boom vang component only	for gooseneck #003	13.00
004-SP	Boom vang component only	for gooseneck #004	13.00
005-SP	Boom vang component only	for gooseneck #005	13.00
006-SP	Boom vang component only	for gooseneck #006	13.00
007-SP	Boom vang component only	for gooseneck #007	13.00
011-SP	Boom vang component only	for gooseneck #011	13.00

Boom fittings

019-080	Boom joiner, bent 15 degrees	for 08mm o.d.,06mm i.d. c'f tube/alum.	\$ 9.40
019-100	Boom joiner, bent 15 degrees	for 10mm o.d.,08mm i.d. c'f tube/alum.	7.95
019-120	Boom joiner, bent 15 degrees	for 12mm o.d.,10mm i.d. c'f tube/alum.	8.20
019-140	Boom joiner, bent 15 degrees	for 14mm o.d.,12mm i.d. c'f tube/alum.	43.70
027c	Boom connector, connects compression strut (026-090,120,140) to 12mm Ø boom		5.20
042-100	Boom grip	for 10mm Ø and 3/8" Ø	2.35
042-120	Boom grip	for 12mm Ø	2.60
042-127	Boom grip	for 12.7mm Ø	8.05
046b	Ring	for use with 046-080,100,120,140	4.15
046-080	Boom band, with pin	for 8mm Ø	7.15
046-100	Boom band, with pin	for 10mm Ø	4.45
046-120	Boom band with pin	for 12mm Ø boom	4.45
046-140	Boom band with pin	for 14mm Ø boom	12.85
047-080	Boom band with tube grip	for GIZMO - 08mm Ø boom	8.75
047-100	Boom band with tube grip	for GIZMO - 10mm Ø boom	8.75
047-120	Boom band with tube grip	for GIZMO - 12mm Ø boom	8.75
048-079	Boom band, glass filled plastic with eye	for 8mm Ø, slimmer version	2.20
048-080	Boom band, glass filled plastic with eye	for 8mm Ø	2.20
048-095	Boom band, glass filled with plastic eye	for 9.5mm Ø boom	2.20
048-100	Boom band, glass filled plastic with eye	for10mm Ø	2.20
048-120	Boom band, glass filled plastic with eye	for12mm Ø	2.20
048-126	Boom band, glass filled plastic with eye	for12.7/12.8mm Ø, slimmer version	2.20
048-127	Boom band, glass filled plastic with eye	for12.7/12.8mm Ø	2.20
049-080	Boom band, nickel plated brass with eye	for 8mm Ø	5.80
049-095	Boom band, nickel plated with eye	for 9.5mm Ø boom	5.80
049-100	Boom band, nickel plated brass with eye	for 10mm Ø	5.80
049-120	Boom band, nickel plated brass with eye	for12mm Ø	5.80
049-127	Boom band, nickel plated brass with eye	for12.7mm Ø	5.80
050-080	Boom band, nickel plated brass, band only	for 8mm Ø	3.20
050-095	Boom band, nickel plated brass, band only	for 9.5mm Ø boom	3.20
050-100	Boom band, nickel plated brass, band only	for 10mm Ø	3.20
050-120	Boom band, nickel plated brass, band only	for 12mm Ø	3.20
050-127	Boom band, nickel plated brass, band only	for 12.7mm Ø boom	3.20
050-140	Boom band, carbon/epoxy, band only	for 14mm Ø boom	8.35
058a	Grommets, rubber (10 pack)	6mm Ø for 8mm Ø	3.65
058b	Grommets, rubber (10 pack)	8mm Ø for 10mm Ø	4.15
058c	Grommets, rubber (10 pack)	10mmØ for 12/12.7mmØ	4.70
082a	'O' rings, highly weather resistant (10 pack)	for 6mm Ø	3.90
082b	'O' rings, highly weather resistant (10 pack)	for10mm Ø	3.35
087z	Sheet hook, stainless steel, laser cut	30mm x 6mm	2.50
099-080	Boom band with non snag eye	for 08mm Ø boom	5.20
099-100	Boom band with non snag eye	for 10mm Ø boom	5.20
099-120	Boom band with non snag eye	for 12mm Ø boom	5.20
099-127	Boom band with non snag eye	for 12.7mm Ø boom	5.20
101-080	Jib boom fitting, forward end	for 8mm Ø	6.80
101-100	Jib boom fitting, forward end	for 10mm Ø	16.70
101-120	Jib boom fitting, forward end	for 12mm Ø	16.70
101-140	Jib boom fitting, forward end	for 14mm Ø boom	16.70
101c	Jib boom fitting, forward end	for 10mm Ø lightweight boom	4.55
101d	Jib boom fitting, forward end	for SAILSetc boom	3.65
101f	Jib boom fitting, aft end	for SAILSetc boom	2.60
101g	Jib boom fitting, aft end	for 8mm & lightweight boom	2.60
101h	Clew fitting	for 8mm Ø	2.60



Boom fittings, continued

102-15A	Counterbalance weight	15g (slimmer shape)	\$ 7.70
102-20A	Counterbalance weight	20g (slimmer shape)	7.70
102-28A	Counterbalance weight	28g (slimmer shape)	7.70
102-35A	Counterbalance weight	35g (slimmer shape)	7.70
102-eA	Counterbalance weight	15g (slimmer shape)	7.70
103-080	Main boom fitting, forward end	for 08mm Ø c'f tube	9.15
103-100	Main boom fitting, forward end	for 10mm Ø c'f tube	9.15
103-120	Main boom fitting, forward end	for 12mm Ø c'f tube	14.40
103-140	Main boom fitting, forward end	for 14mm Ø c'f tube	14.40
103a	Main boom fitting, forward end	for SAILSetc boom with b/r gooseneck	5.20
103f	Main boom fitting, forward end	for 10mm Ø tube with std gooseneck	2.50
103g	Main boom fitting, forward end	for SAILSetc boom with std gooseneck	1.95
103t	Tang	for SAILSetc boom with 103g	3.40
104	Thumbwheel (quick adjust, no tools required)	fits SAILSetc boom slide (104a,b,d,e,120d)	3.00
104-080	Sheet attachment, s/steel, adjustable	for 8mm Ø	5.20
104-100	Sheet attachment, s/steel, adjustable	for 10mm Ø	6.50
104-120	Sheet attachment, s/steel, adjustable	for 12mm Ø	6.50
104-127	Sheet attachment, s/steel, adjustable	for 12.7mm Ø	6.50
104-140	Sheet attachment, s/steel, adjustable	for 14mm Ø	6.50
104a	Boom track slide with clew hook	for SAILSetc boom	4.70
104b	Boom track slide, for various attachments	for SAILSetc boom	3.40
104c	Clew hook	for SAILSetc boom	1.45
104d	Sheet attachment, adjustable	for SAILSetc boom	6.00
104e	Sheet adjustment track slide, hook, O ring	for SAILSetc boom	4.45
104f	Clew attachment, adjustable	for 10mm Ø	5.50
120d	Jib boom swivel, with ball race, adjustable	for SAILSetc boom	31.95
120-080	Jib boom swivel, with ball race, adjustable	for 08mm Ø	23.75
120-100	Jib boom swivel, with ball race, adjustable	for 10mm Ø	28.90
120-120	Jib boom swivel, with ball race, adjustable	for 12mm Ø	40.50
120-140	Jib boom swivel, with ball race, adjustable	for 14mm Ø	44.95
121	Swivel, with ball race	17mm x 8mm Ø	32.10
150ct	Cable tie	to attach sheet lines to booms	.70
221c	Curved base plate, for mast and boom	chromed brass, with eye	7.30

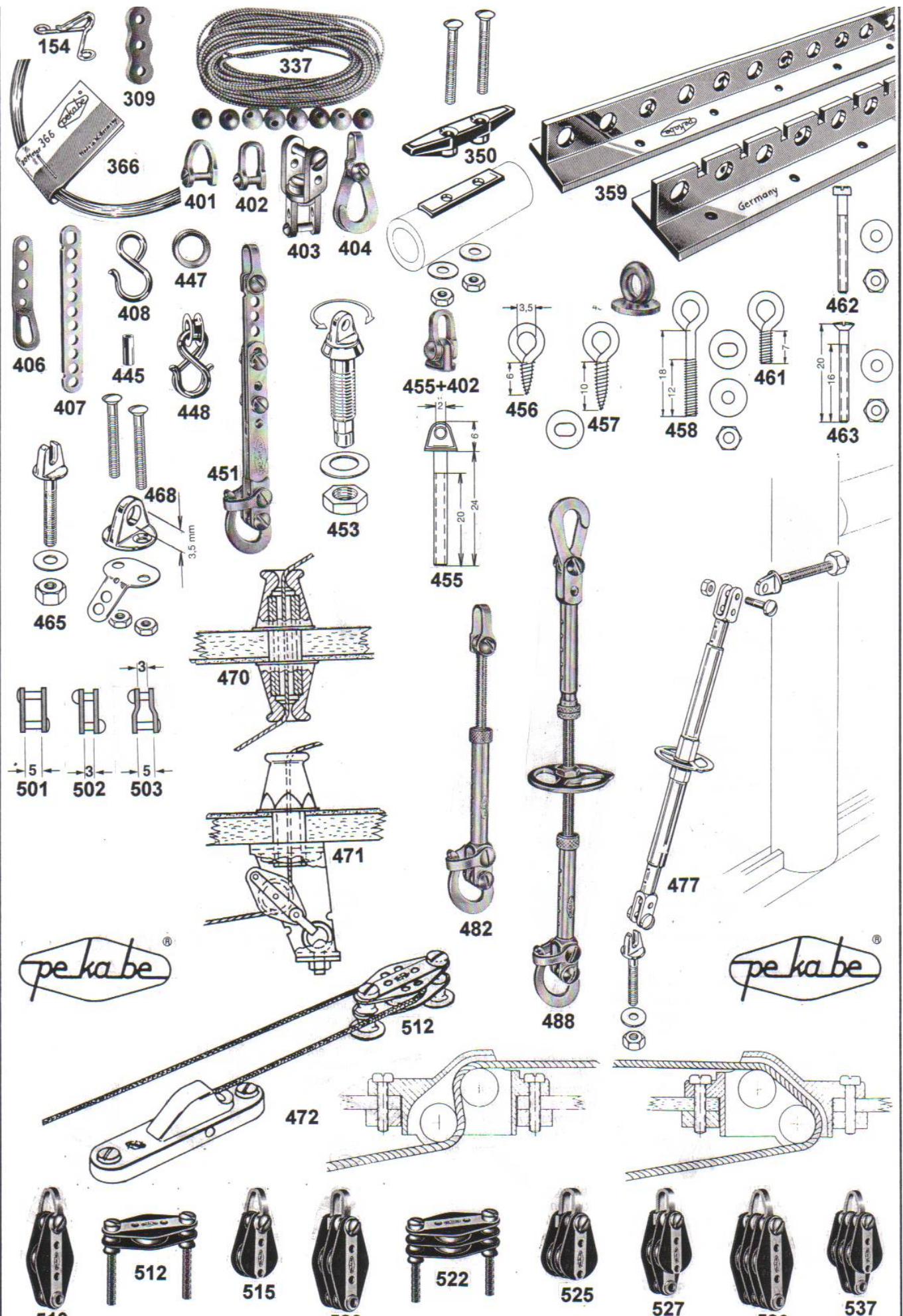
Pekabe fittings

P154	Sail hook – connects sail to mast jackstay, nickel plated brass	20/pack	\$ 7.60
P309	Bowsies, fibre reinforced plastic (black)	10/pack	7.60
P337	Elastic, textile-covered, 1mm Ø	5m	5.60
P350	Horn/jamb cleat, with spaces for curved or flat surfaces	1 set	8.30
P359	Mast step & chain plate T-section anodised aluminium, length 135mm&270mm	set	18.75
P366	INOX wire stainless steel, flexible, ideal for stays/shrouds, 0.6mm	20m	18.20
P401	Shackle, wide dee, inside jaw width 5mm x 6mm throat	each	2.65
P402	Shackle, standard dee, inside jaw width 3mm x 6mm throat	each	2.65
P403	Shackle, swivel jaw, widths as for #401 & #402, adapts to Pekabe blocks	each	7.60
P404	Shackle, with two flat hooks, non snag	each	3.40
P406	Tang, for the attachment of fittings or anchor points to hull/mast	pair	3.30
P407	Universal punched strop, can be bent at each drill hole	pair	1.90
P408	S-hook, chrome plated brass, for light loads only	5/pack	2.50
P445	Swage/sleeve i.d. 1.2, o.d. 2.0, length 5.0mm	20/pack	5.40
P447	Thimble i.d. 3.8, o.d. 6.3, width 2.5mm	20/pack	5.40
P448	Thimble hook, double S-hook fitted to #447 for sail or sheet fixing	pair	3.60
P451	Shroud adjuster with hook, 12mm of adjustment, quickly attached/detached	each	13.15
P453	Rotating eye bolt, eye bolt #455 fitted in M5 threaded bolt	each	7.60
P455	Eye bolt, high strength, eye Ø 2mm, thread Ø 2.6mm, length 24mm	each	4.20
P456	Eye screw with deck plate, eye Ø 3.5mm, thread length 6mm	10/pack	9.30
P457	Eye screw with deck plate, eye Ø 3.5mm, thread length 10mm	10/pack	9.45
P458	Eye bolt with deck plate, nut & washer, eye Ø 3.5, thread Ø 2.3, length 18mm	5/pack	9.45
P461	Eye bolt with deck plate, nut & washer, eye Ø 3.5, thread Ø 2.3, length 7mm	5/pack	8.95
P462	Metal thread, cheese-head with nut and flat washer M2 x 20mm	5/pack	5.00
P463	Metal thread, countersunk head with nut and flat washer M2 x 20mm	5/pack	5.00
P465	Forked bolt with nut and flat washer M2 x 24mm	each	4.40
P468	Pad eye with fasteners & special backing plate, eye Ø 3.5mm	1/set	15.20
P470	Through deck fairlead, twin head, non snag thru deck sheet guidance	2/set	20.25
P471	Through deck fairlead for single block, non snag (block not included)	1/set	13.85
P472	Through deck block, two sheaves with spacers for flat/curved deck	1/set	21.45
P477	Mast brace/compression strut, adjustment range 81-106mm	1/set	33.60
P482	Rigging screw single with quick adjust and quick attach/detach	each	16.70
P488	Rigging screw double with hand-wheel quick release each end	each	32.90
P501	Shackle double, 5mm between side plates, connecting block to block	each	3.65
P502	Shackle double, 3mm between side plates, connecting block to block	each	3.65
P503	Shackle single, 5/3mm between side plates, connecting block to block	each	3.65
P510	Single block with shackle and becket	each	15.70
P512	Single deck block / foot block	each	15.70
P515	Single block with shackle	each	15.70
P520	Double block with shackle and double becket	each	18.50
P522	Double deck block / foot block	each	18.50
P525	Double block with shackle	each	18.50
P527	Double block with shackle and single becket	each	18.50
P530	Triple block with shackle and triple becket	each	20.85
P537	Triple block with shackle centre becket	each	20.85

Pekabe use only brass or stainless steel material and fibre-reinforced plastic. Central to the Pekabe range, are the time tested model yacht blocks, known to model yachtsmen all over the world. Developed by Pekabe, fitted out with ball-bearing mounted sheaves and with sea water resistant NEOX lubrication.

PLEASE NOTE:	P402 - #044	P401 - #045
	P510 - #061a	P515 - #061b
	P520 - #062	P512 - #063
	P522 - #064	P472 - #065

See following pages for further Pekabe information



Pekabe fittings information

- P154** Sail hooks. These sail hooks are made of brass wire and are nickel-plated. Splayed out securing eyelets, extra long hooks with flattened, light raised tips.
- P309** Bowsie. In good-gripping form made of special fibre-reinforced plastic. Very lightweight, 0.26 gram. Where necessary, holes may be easily drilled out to a larger diameter.
- P337** Elastic, textile-covered, 1mm Ø (5 metres). Though textile-sheathed, this elastic can be stretched to around double its length. Owing to its covering, knotting is first-rate (though no bare elastic).
- P350** Cleat, comprising a total of 11 parts. Can be fitted to masts and round booms using the relevant spacer; the flat spacer can be used on sensitive decks, secured either with threaded bolts and nuts or by means of stainless steel self-tapping screws. The P350 does not have any sharp edges.
- P359** Universal chainplate and mast-step, from anodised aluminium T-section 15x10x1.5mm; 9mm hole spacing, hole diameter 3.5mm. Versatile application, optionally divisible, Very lightweight but firm. Sold in length comprising of a 30 division piece without notches (for shrouds and stays) and a 15 division piece with notches (for mast adjustment), total length around 400mm. The modeller himself determines the length and shape of the section ends. Protect cut edges with metal coating lacquer.
- P366** INOX wire 0.6mm. Take care when handling hard spring steel wire. Leave the coils on the wire roll until fully used up. When bending wire, use round-nose pliers, not edged pliers. Do not try to open previously bent wire, may break at that point. Model yacht shroud forces of 10 to 20 kg occur.
- P401** Shackle, 5mm with bolt.
- P402** Shackle, 3mm with bolt.
- Shackles are rigging elements used for both standing and running gear. Wherever a shackle is located, the rigging may be opened, closed, modified and pre-arranged parts exchanged.
- P403** Swivel shackle. The frame width refers to the P401 and P402 shackles. They are joined together and can be rotated, so that a block, that has been mounted, can move freely corresponding to the cable pull. The side holes allow a thin cord to be passed through (and tied a knot) to limit the potential rotation of the swivel shackle. P403 is only for use with running rigging, suitable however for all Pekabe block series.
- P404** Double flat hook with shackle. A hook unsurpassed in carrying capacity and elegant design. Sturdy double hook for the fastening of forestay and standing backstay. On the closed double hook, the concealed hook points prevent the sheets catching or hooking on to other boats.
- P406** Hook-strap/Tang. Versatile. Built for especially high load-carrying applications at decisive location. The small drill hole marks the bending location (delivered flat). For all Pekabe hooks, shackles and double-hooks (without P448). Fastening with P462.
- P407** Universal punched strip. May be bent at each drill hole. Offers great versatility and stability.
- P408** Tackle hook. This generally recognised, well-formed hook is used for the running gear and suspension of sails, not suspension of the forestay or shrouds. Carrying capacity of around 3.5kg
- P445** Sleeve, swage. Measures 1.2/2.0x5mm.
- P447** Thimble. Measures 3.8/6.3x2.5mm.
- P448** Thimble hook. The thimble hook offers outstanding application on the sheet horn and sail head.
- P451** Adjustable shroud-hook, P451 is correctly used at all locations where an adjustment may remain unchanged for a prolonged period of time. The adjustment stems from different hole spacings of the internal and external slides and is accomplished by around 1mm steps. The CONTROLLABLE ADJUSTMENT RANGE is 12mm. Both the "quick mounting" feature and "adjustment controllability" feature are Pekabe ideas. Also the "combination facility" whereby all Pekabe rigging screws and shroud hooks can be inter-combined or used to extend each other.
- P453** Rotating Eye Bolt. Here the rotatable eye bolt (P455) is located in an M5 threaded bolt fitted with a conical flange and secured with special nuts. A washer and flat M5 nut are supplied with it.
- P455** Eye-bolt M2.6x24mm with nut and washer and one rounded nut. The high-strength conical eye bolts are manufactured from solid brass. Via a vacant P455 positioned on the deck, sheets slip through without snagging. The bore of the eye is designed for M2 screws and shackle bolts. The width of the eye matches the fork part of the rigging screws P482, P488 and pressure-screw P477. Shackles P401, P402 and P403 can be attached also.
- P456** Eye screw 6mm, with deck-plate.
- P457** Eye screw 10mm, with deck-plate.
- P458** Eye screw M2, 3x18mm, with deck-plate, nut and washer.
- P461** Eye screw M2, 37mm, with deck-plate, nut and washer. The eye screw sits on its lightly curved special deck-plate as if made from a single casting. For all Pekabe hooks and double hooks, rigging screw and even the bows of shackles P401 and P402. Eye screws loading limit is 16kg.
- P462** Cheese-head screw M2x20mm with nut and washer.
- P463** Flush screw M2x20 mm with nut and washer. The screws are fine quality brass turned parts (i.e. not rolled or pressed). Excessively long thread ends can be shortened.

Pekabe fittings information, cont.

- P465** Forked bolt with washer and nut M2.6. It's basic design corresponds to the P455 eye bolt, the slot is exactly 2mm wide. Forked bolts can be particularly useful as supporting braces. Braces do not have to be laboriously screwed on or unscrewed, they can simply fixed or removed.
- P468** Eye Plate, solid brass, using the tried and tested conical and rounded shape (as with the P455) to prevent sheet lines from snagging. The 3.5mm bore allows the use of the swivel hook with Pekabe tension screws P482, P488 and P451 tension rails, as well as the P404 and P448 double hooks. The Eye Plate is supplied with 2 countersunk screws and nuts as well as a special spacer, used for attachments for maximum capacity diagonal pull. Plate diameter 12mm.
- P470** Twin-head through deck fairlead Above deck, the arrangement with P471 is identical. Below deck, a "head" is also used. Burr-free sheet guidance; the sheet lies only in the heads, not on the tube. Natural wear is prevented through hard chrome-plating of the "heads". All parts made of brass. Heads hard chrome-plated, washers nickel-plated, threaded tube made of untreated brass.
- P471** Through deck fairlead for one single block. All that is seen of the entire arrangement above deck is the chrome-plated fairlead shimmed up by a turned bevelled washer. It's wave-breaking shape prevents penetration of spray into the boat interior. (Max. sheet diameter 1.8mm). The deck and necessary deck girder (hardwood strip) are provided at a suitable location with a 5.1mm drill hole. The threaded tube grips right through both deck and strip, interconnecting the components. Located below deck is the plummer block consisting of two brass parts. An eye screw holds the sheet is within 20° (10° on each side). Above deck the neatly radiused collar of the fairlead releases the sheet to all sides without restriction. All parts made of brass; head-hard chrome-plated; other parts nickel-plated or untreated brass. Pack contains no block.
- P477** Mast brace/pressure screw. Usable length 81-106mm. Very fine adjustments with minimal screw lead. One revolution only 0.9mm lead. One of the spindle casings is slit and operates as a friction screw to prevent accidental turning on the thread. Parts supplied: Pressure screw with hand-wheel and M2 screws with nuts, eye bolt and forked bolt with washers and nuts M2.6.
- P482** Single-rigging-screw with spindle positively secured against loss, with quick-lock. Adjustment 18mm. Spindle with thread M2.6 and 0.45mm pitch. SAFETY: The load-carrying thread length always remains the same. Versatile: Instead of the swivel hook, a double hook P404, the bow of shackles P401 and P402 or an eye bolt P455 can be inserted into the fork part.
- P488** Double rigging screw with hand-wheel. Five check bores in the threaded tubes have practical significance; when the spindle ends are visible in the correspondingly equal check bore, parallel alignment of the spindles is then obtained. Hand-wheel with a diameter of 18mm. To enable revolutions to be counted, the hand-wheel has been provided with an extremely inconspicuous though easily feel-able "pointer". P488 is equipped with the quick fastening system which, however, can be replaced by the double flat hook forming part of the delivery. P488 may be used as an after-stay rigger or as a boom vang, because the hand-wheel assures unusually fine adjustment. One revolution = 0.9mm. Maximum adjustment range = 36mm. P488 is NEVER to be used as pressing-down device. Suitable for this purpose is exclusively the pressure screw P477.
- P501** Double shackle, 5mm.
- P502** Double shackle, 3mm
- P503** Double shackle, 5/3mm.
- Blocks which have to be removed regularly would be more quickly and more easily mounted with a double shackle. Blocks can also be joined together.
- P510** Single block, with shackle and becket.
- P512** Single foot block. Two nuts and four washers (for above and below deck) are included with the block, also small shims are supplied to lift the block (viewed from the side) on one side where required by the direction of cord tension. In plan view, the blocks centreline keeps the cords apart.
- P515** Single block with shackle. Guarantees to maintain the distance between the side cheeks and jamb free rotation of the rope pulley.
- P520** Double block, with shackle and double becket.
- P522** Double foot block. Nuts, washers and shims as for P512.
- P525** Double block with shackle.
- P527** Double block with shackle and single becket.
- P530** Triple block, with shackle and triple becket.
- P537** Triple block with shackle and centre becket.

The shackles of the blocks are detachable to enable them to be directly inserted into eye screws, etc. or to be changed against double or swivel shackles. The carrying capacity of the blocks is barely utilised on model boats. Cord diameter may be up to max. 1.8mm. Blocks type P510,P515,P520,P525,P530 are also available in simulated wood finish instead of the black coloured cheeks.

Fittings - International One Metre (IOM)

This list is to assist with the selection of fittings specifically relating to the IOM Class.

001	Gooseneck/kicking strap	for alloy GROOVY	\$ 34.70
005	Gooseneck/kicking strap	for round mast	39.85
011	Gooseneck/kicking strap	ball raced, to fit SAILSetc boom	109.20
018	Joiner for alloy round/alloy groovy	for 12.7(\$2.60) & 11.1mm Ø (state which)	7.00
021-075	Spreader kit, aerofoil section	2x75mm long	14.60
021f	Spreader kit, round section	2x90mm long, 1.6mm Ø mast rod	9.50
021g	Spreader kit, round section	2x90mm long, 2.00mm Ø mast rod	9.50
021m	Spreader kit, black plastic body,clip to mast	for 10.8,11,12.7,14 Ø (state which)	15.20
022-045	Backstay crane	45mm long	7.45
023	Head fitting for round or alloy groovv	11.1mm and 12.7mm Ø (state which)	3.25
031	Rigging screw, single end	for shrouds, M3	6.80
037b	Eyebolt, flat sides	M3 x 20mm	3.15
039-110	Mast heel	for 11.1mm Ø alloy GROOVY	8.10
039-127	Mast heel	for 12.7mm Ø alloy GROOVY	8.10
051a	Luff ring	state mast Ø	1.30
054	Screw top pot, super-light containment	for receiver and batteries, 23 grams	6.00
057c	Bowsies (small)	12 x 3mm (10/pack)	6.40
061b	Single pulley block with shackle	(Pekabe P515)	15.70
061h	Single pulley block with shackle	(Hales)	17.80
063	Single deck block	(Pekabe P512)	15.70
063h	Single deck block	(Hales)	16.50
065	Through deck block, 2 sheaves w/spacers	(Pekabe P472)	21.45
068c	Tiller arm, plastic with metal collar	3mmØ (can be drilled to 4mmØ)	9.40
069-040	Rudder stock and tube with seal	4mm Ø s/s stock, plastic tube	24.40
082b	'O' rings, highly weather resistant	10mm Ø (10/pack)	3.35
086	Bung, tapered for drain hole	20 x 8>4mm Ø	1.20
087b	Hook, stainless steel wire	15 x 6mm (5/pack)	4.55
087g	Hook s/s laser cut	15 x 7mm	2.35
087z	Sheet hook, stainless steel, laser cut	30 x 6mm	2.50
100a	Masthead wind indicator, standard	light & free moving	40.00
100b	Masthead wind indicator, deluxe	with ball bearings	62.00
100c	Tell-tales (pair)	apply to headsail	2.85
101c	Jib boom fitting, forward end	for 10mm Ø l/w boom (requires 104-100)	4.55
101d	Jib boom fitting forward end	for SAILSetc boom	3.65
101f	Jib boom fitting, aft end	for SAILSetc boom	2.60
102-15A	Counterbalance weight	15 grams (slimmer shape)	7.70
102-20A	Counterbalance weight	20 grams (slimmer shape)	7.70
102-28A	Counterbalance weight	28 grams (slimmer shape)	7.70
102-35A	Counterbalance weight	35 grams (slimmer shape)	7.70
102eA	Counterbalance weight, use with 101e	15 grams (slimmer shape)	7.70
103a	Main boom fitting, for ball raced gooseneck	for SAILSetc boom	5.20
104	Thumbwheel, fits SAILSetc boom slide (104a,b,d,e,120d) no tools reqd for adjustment		3.00
104a	Clew slide and hook (1 of each)	for SAILSetc boom	4.70
104b	Boom track slide, for various attachments	for SAILSetc boom	3.40
104c	Clew hook	for SAILSetc boom	1.45
104d	Sheet attachment, adjustable (1 of each)	for SAILSetc boom	6.00
104e	Sheet adjustment track slide,hook,O ring	for SAILSetc boom	4.45
104f	Clew attachment, adjustable	for 10mm Ø lightweight boom	5.50
120d	Jib boom swivel, with ball race, adjustable	for SAILSetc boom	31.95
120-100	Jib boom swivel, with ball race, adjustable	for 10mm lightweight boom	28.90
144f	Mast ram, bulkhead/deck mounted	for 12.7mm Ø mast	8.60
144g	Mast ram, bulkhead/deck mounted	for 12mm mast	8.60
144t	Mast ram, bulkhead/deck mounted	for any mast	19.90
150ct	Cable tie	to attach sheet lines to booms	.70
154e	Elastic (for sheet tension)	1.00mm Ø single strand (5m)	3.15

156	Tension spring, stainless steel	for sheet attachment	\$ 3.00
158	Swivel ball raced	for jib boom	5.50
160fc	Fishing clip	(qty 2)	.40
162mh	IOM mainsail headboard arm	(rotating)	2.00
184	Self adhesive dacron, 3.8oz	for deck patches,1370x250mm (colours, see pg 7)	9.00
186	Self adhesive dacron, 3.8oz	for deck patches,1370x250mm (colours, see pg 7)	9.60
188	Velcro (industrial quality)	25mm x 200mm	1.50
200	Bow bumper	TS2	15.00
200-4	Bow bumper	Obsession	17.50
202	Mast plug lower (heel)	for 12.7 round/groovy mast (TS2)	4.70
203	Mast plug lower (heel),	for 11.1 round/groovy mast (TS2)	4.70
204	Mast shoe for #202, with provision for keel fin bolt & main sheet block		21.00
W08	Wire, s/s, for shrouds,,IOM,M	0.50mm single strand 48kg b.s. (9.1m)	7.20
S23	Spectra, yellow or white	0.30mm Ø 23kg b.s. (10m)	3.00
S36	Spectra. yellow or green	0.45mm Ø 36kg b.s. (10m)	3.60
S54	Spectra, yellow	0.50mm Ø 54kg b.s. (10m)	5.80

R.C. Accessories

280ES	Sailwinch RMG	\$251.90
FLASH	Digital voltage display RMG, reads battery voltage from 3.8 to 12.3 volts	35.20
HDW	Hood waterproof for on-off switch (SWT)	1.70
SWT	Switch toggle power on-off	2.30
AP	Aerial housing for boat	6.95

Deck Kit_ (see page 15 for contents)

DK-01	\$ 67.00
-------	----------

Rig Kits (see page16 for contents)

RK-01	A Rig Kit	\$209.00
RK-02	B Rig Kit	209.00
RK-03	B Rig Kit	209.00
RK-031	C Rig Kit <i>(based on using 1m mast section)</i>	193.00

Masts

AHT1082	High tensile natural anodised 0.6mm wall thickness	10.8mm x 2000mm	\$ 36.00
AG11120	Alloy/groovy mast, natural anodised	11.1mm x 2000mm	58.85
AG12720	Alloy/groovy mast, natural anodised	12.7mm x 2000mm	57.00
ART1120	Alloy/round tube, natural anodised	11.0mm x 2000mm	36.55
ART12820	Alloy/round tube, natural anodised	12.8mm x 2000mm	34.75

Boom Kits

160-KIT	Main boom kit	SAILSetc spar section and fittings	350mm long	\$ 32.75
161-KIT	Jib boom kit	super-light boom kit for A rig	400mm long	39.90
162-KIT	Jib boom kit	SAILSetc spar section and fittings	400mm long	40.60
163-KIT	Main boom kit	super-light boom kit for A rig	350mm long	29.50

Boom Kits Completed

164	Main boom	super-light boom ready to rig	A rig	\$ 47.30
170-350	Main boom	SAILSetc spar section, ready to rig	A & B rig	43.50
170-310	Main boom	SAILSetc spar section, ready to rig	C rig	43.50
171-400	Jib boom	super-light boom, almost ready to rig	A rig	56.35
172-400	Jib boom	SAILSetc spar section, ready to rig	A rig	57.05
172-350	Jib boom	SAILSetc spar section, ready to rig	B rig	56.35
172-310	Jib boom	SAILSetc spar section, ready to rig	C rig	54.95

Keel bulb, keel fin and rudder

B-01	Keel bulb lead ballast, precision cast with slot, 2.4kg	(OBSESSION)	\$ 93.00
B-02	Keel bulb, precision cast with slot, circa. 2.4kg	IOM	83.60
F-02	Keel fin, carbon fibre, parallel edges, 85mm cord	(OBSESSION)	212.00
F-03	Keel fin, carbon fibre, slight taper, 90-75mm cord		172.00
R-02	Rudder, carbon fibre, with 4mm Ø rudder stock	(OBSESSION)	87.50
R-03	Rudder, carbon fibre, with 4mm Ø rudder stock		57.50
R-359z	Rudder, injection moulded glass filled plastic with 4mm Ø stock (SAILSetc)		58.65

Fasteners (All fasteners are in 304g/A2 or 305g stainless steel and in packets of 10)

Code Dia. Length Code Dia. Length

NUTS

Standard hexagon, metric coarse thread

N2	M2	\$ 3.00
N25	M2.5	3.20
N3	M3	3.25
N35	M3.5	3.30
N4	M4	3.30

Nyloc Nut (Nylon insert self locking nut)

NN2	Nyloc M2	\$20.55
NNN2	Nyloc M2 brass nickel plated	18.40
NN25	Nyloc M2.5	7.50
NN3	Nyloc M3	5.80
NN4	Nyloc M4	6.00
ND4	DOME M4	each 1.75

WASHERS

O.D. Thickness

Flat Round

		mm	mm	
W2	M2	5	0.3	\$.80
W25	M2.5	6	0.5	.90
W3	M3	7	0.5	.95
W4	M4	9	0.8	1.00

Flat round, brass nickel plated (100/pack)

		O.D.	Thickness	
		mm	mm	
WN2	M2	4.7	0.4	\$ 3.90
WN3	M3	7.8	0.5	4.50

METAL THREADS Dia. / Length

Dia. / Length

Pan head cross recess

M2-3	M2 x 3mm	\$ 2.60
M2-4	M2 x 4mm	5.70
M2-5	M2 x 5mm	5.90
M2-6	M2 x 6mm	6.00
M2-8	M2 x 8mm	6.30
M2-10	M2 x 10mm	6.60
M2-12	M2 x 12mm	7.10
M2-16	M2 x 16mm	7.30
M25-4	M2.5 x 4mm	6.10
M25-5	M2.5 x 5mm	6.30
M25-6	M2.5 x 6mm	6.20
M25-8	M2.5 x 8mm	6.60
M25-10	M2.5 x 10mm	6.90
M25-12	M2.5 x 12mm	7.00
M25-16	M2.5 x 16mm	7.30
M3-5	M3 x 5mm	2.85
M3-6	M3 x 6mm	3.00
M3-8	M3 x 8mm	3.20
M3-10	M3 x 10mm	2.20
M3-12	M3 x 12mm	2.60
M3-16	M3 x 16mm	2.90
M4-8	M4 x 8mm	4.10
M4-10	M4 x 10mm	3.10
M4-12	M4 x 12mm	3.60
M4-16	M4 x 16mm	3.60
M4-20	M4 x 20mm	4.60

Countersunk cross recess

MC2-4	M2 x 4mm	\$ 2.60
MC2-5	M2 x 5mm	5.90
MC2-6	M2 x 6mm	5.90
MC2-8	M2 x 8mm	6.00
MC2-10	M2 x 10mm	6.10
MC2-12	M2 x 12mm	6.50
MC2-16	M2 x 16mm	6.60
MC25-4	M2.5 x 4mm	6.90
MC25-6	M2.5 x 6mm	5.80
MC25-8	M2.5 x 6mm	6.00
MC25-10	M2.5 x 10mm	6.10
MC25-12	M2.5 x 12mm	6.50
MC25-16	M2.5 x 16mm	8.10
MC3-6	M3 x 6mm	2.60
MC3-8	M3 x 8mm	2.25
MC3-10	M3 x 10mm	2.40
MC3-12	M3 x 12mm	2.60
MC3-16	M3 x 16mm	2.65
MC4-8	M4 x 8mm	3.60
MC4-10	M4 x 10mm	3.05
MC4-12	M4 x 12mm	3.20
MC4-16	M4 x 16mm	3.70
MC4-20	M4 x 20mm	4.25

Metal thread socket-head, including key

MS25-6	M2.5 X 6mm	\$ 5.00
--------	------------	---------

SELF TAPPING SCREWS

Pan head cross recess

S2-1/4	2g x 1/4" (6.4mm)	6.10
S2-3/8	2g x 3/8" (9.5mm)	6.60
S2-1/2	2g x 1/2" (12.7mm)	9.20
S4-1/4	4g x 1/4"	2.20
S4-3/8	4g x 3/8"	2.25
S4-1/2	4g x 1/2"	2.40
S4-5/8	4g x 5/8" (16.0mm)	2.50
S4-3/4	4g x 3/4" (19.0mm)	2.50

Countersunk cross recess

SC4-3/8	4g x 3/8"	\$2.20
SC4-1/2	4g x 1/2"	2.30
SC4-5/8	4g x 5/8"	2.40
SC4-3/4	4g x 3/4"	2.50

SPLIT PINS

SP16-20	1.6mm x 20mm	\$ 2.75	SP25-20	2.5mm x 20mm	\$ 4.00
SP20-20	2.0mm x 20mm	3.05	SP25-25	2.5mm x 25mm	4.40

If you have fastener requirements other than shown here, please call.

LEGEND:

IOM	INTERNATIONAL ONE METRE
M	INTERNATIONAL MARBLEHEAD
10R	INTERNATIONAL TEN RATER
A	INTERNATIONAL A CLASS
6M	SIX METRE
AC	AMERICA'S CUP
EC12	EAST COAST 12

ACKNOWLEDGEMENTS and with thanks to:

- | | |
|-------------------|----------------------------|
| Drawings | - Graham Bantock, SAILSetc |
| Web page | - Eduard Cowell |
| Front cover photo | - Bruce Mathers |
- IOM World Championships, Mooloolaba, Queensland, September 2005